



BEEF & VEAL MARKET SITUATION



CMO Committee 24 January 2019

LIVESTOCK

EU EVOLUTION TOTAL BOVINE

JUNE SURVEY

May/Jun 1000 Hd	TOT LIVESTOCK				%Var 2018 2017	BOVINE < 1 Year				%Var 2018 2017	BOVINE 1-2 Year				%Var 2018 2017	BOVINE > 2 Year				%Var 2018 2017
	2015	2016	2017	2018		2015	2016	2017	2018		2015	2016	2017	2018		2015	2016	2017	2018	
BE	2 531	2 555	2 454	2 450	-0.2%	744	750	717	710	-0.9%	504	512	500	492	-1.6%	1 283	1 293	1 237	1 247	+0.8%
BG																				
CZ																				
DK	1 568	1 583	1 565	1 560	-0.3%	524	547	527	538	+2.1%	316	307	311	294	-5.5%	728	730	727	729	+0.3%
DE	12 653	12 563	12 366	12 093	-2.2%	3 846	3 805	3 723	3 618	-2.8%	3 002	2 983	2 948	2 848	-3.4%	5 805	5 775	5 694	5 627	-1.2%
EE																				
IE	6 964	7 221	7 364	7 349	-0.2%	2 042	2 126	2 131	2 078	-2.5%	1 705	1 853	1 914	1 919	+0.2%	3 216	3 242	3 319	3 351	+1.0%
EL																				
ES	6 234	6 451	6 588	6 725	+2.1%	2 281	2 413	2 480	2 504	+1.0%	898	896	927	990	+6.8%	3 055	3 141	3 181	3 230	+1.5%
FR	19 463	19 559	19 433	18 963	-2.4%	5 603	5 638	5 542	5 258	-5.1%	3 540	3 561	3 523	3 446	-2.2%	10 319	10 362	10 367	10 258	-1.0%
HR																				
IT	6 146	6 183	6 118	6 170	+0.8%	1 670	1 702	1 723	1 757	+1.9%	1 370	1 502	1 472	1 466	-0.4%	3 107	2 979	2 923	2 948	+0.9%
CY																				
LV																				
LT																				
LU																				
HU																				
MT																				
NL	4 134	4 245	4 096	3 918	-4.4%	1 624	1 692	1 602	1 569	-2.1%	672	630	600	523	-12.9%	1 838	1 923	1 893	1 825	-3.6%
AT	1 950	1 933	1 938	1 907	-1.6%	622	605	620	606	-2.3%	437	441	431	433	+0.4%	891	887	888	869	-2.2%
PL	5 961	5 939	6 143	6 201	+0.9%	1 669	1 728	1 721	1 686	-2.0%	1 529	1 576	1 701	1 734	+1.9%	2 763	2 635	2 721	2 781	+2.2%
PT		1 664	1 722	1 722	+0.0%		521	537	529	-1.5%		264	281	274	-2.6%		879	904	919	+1.7%
RO	2 078	2 081	2 012	2 002	-0.5%	477	481	454	444	-2.2%	235	240	229	236	+2.8%	1 366	1 360	1 329	1 322	-0.5%
SI																				
SK																				
FI																				
SE	1 476	1 489	1 501	1 507	+0.4%	466	475	472	475	+0.6%	372	375	385	381	-1.1%	638	639	644	652	+1.1%
UK	9 919	10 033	10 004	9 891	-1.1%	2 912	2 989	2 940	2 908	-1.1%	2 380	2 474	2 516	2 479	-1.5%	4 626	4 569	4 548	4 504	-1.0%
EU	81 076	83 499	83 305	82 457	-1.0%	24 481	25 473	25 190	24 681	-2.0%	16 959	17 613	17 740	17 514	-1.3%	39 635	40 414	40 375	40 263	-0.3%

Source : EStat Newcronos

EU %Var is calculated considering only countries available in 2017 AND 2018

24January 2019

LIVESTOCK

EU EVOLUTION TOTAL BOVINE

JUNE SURVEY

May/Jun 1000 Hd	TOTAL COWS				%Var 2018 2017	DAIRY COWS				%Var 2018 2017	OTHER COWS				%Var 2018 2017
	2015	2016	2017	2018		2015	2016	2017	2018		2015	2016	2017	2018	
BE	987	1 005	970	968	-0.3%	524	536	521	532	+2.1%	463	469	449	435	-3.0%
BG															
CZ															
DK	661	669	665	667	+0.3%	561	572	570	575	+0.9%	99	97	95	91	-4.2%
DE	4 969	4 957	4 885	4 830	-1.1%	4 287	4 272	4 214	4 167	-1.1%	682	685	670	663	-1.1%
EE															
IE	2 372	2 502	2 514	2 529	+0.6%	1 296	1 398	1 433	1 481	+3.4%	1 076	1 104	1 081	1 048	-3.1%
EL															
ES	2 678	2 801	2 832	2 865	+1.2%	853	827	825	825	+0.0%	1 825	1 973	2 007	2 040	+1.7%
FR	7 809	7 838	7 811	7 684	-1.6%	3 606	3 576	3 552	3 509	-1.2%	4 203	4 263	4 259	4 175	-2.0%
HR															
IT	2 375	2 245	2 187	2 192	+0.2%	2 061	1 948	1 907	1 904	-0.1%	314	297	280	288	+2.9%
CY															
LV															
LT															
LU															
HU															
MT															
NL	1 702	1 811	1 753	1 693	-3.4%	1 622	1 743	1 694	1 630	-3.8%	80	68	59	63	+7.0%
AT	762	755	755	740	-2.0%	540	536	540	538	-0.4%	222	218	215	202	-5.8%
PL	2 444	2 332	2 374	2 429	+2.3%	2 279	2 146	2 154	2 233	+3.7%	165	186	220	196	-10.9%
PT		736	747	745	-0.2%		246	244	244	+0.2%		490	504	501	-0.5%
RO	1 233	1 228	1 199	1 197	-0.2%	1 216	1 216	1 184	1 184	+0.1%	17	12	15	12	-19.5%
SI															
SK															
FI															
SE	523	524	530	534	+0.8%	338	331	322	319	-0.8%	184	194	208	215	+3.3%
UK	3 472	3 493	3 481	3 441	-1.1%	1 895	1 897	1 891	1 883	-0.4%	1 576	1 596	1 589	1 558	-2.0%
EU	31 987	32 895	32 702	32 514	-0.6%	21 078	21 243	21 050	21 025	-0.1%	10 907	11 652	11 651	11 488	-1.4%

Source : EStat Newcronos

EU %Var is calculated considering only countries available in 2017 AND 2018

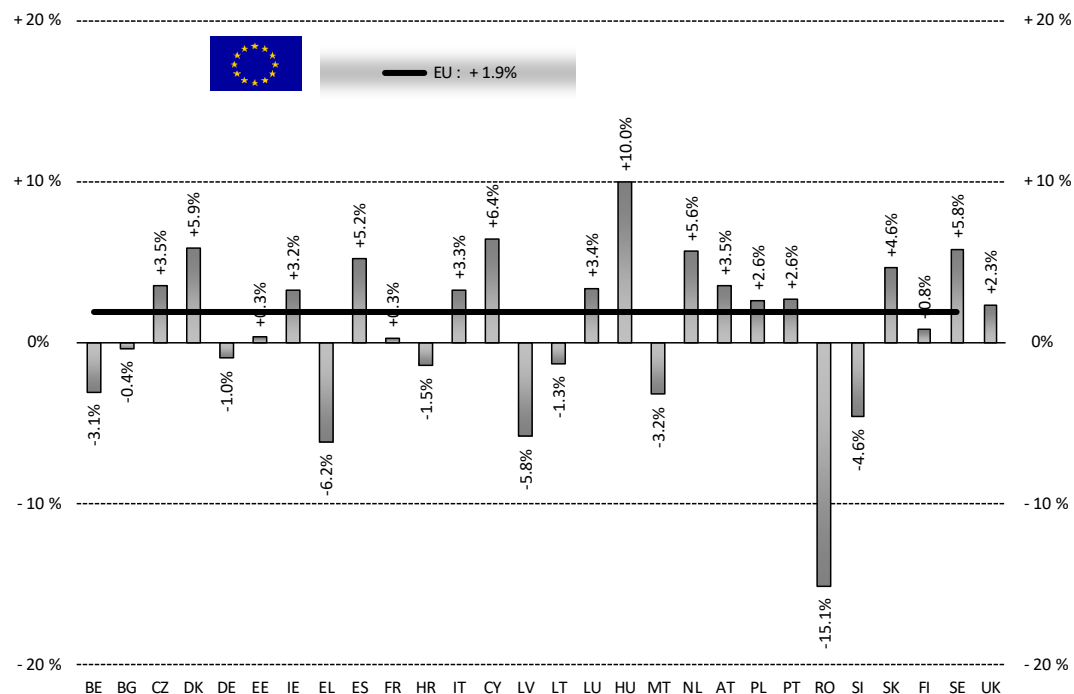
24January 2019

PRODUCTION

% EVOLUTION HEADS

HEADS	Jan-Oct 18/17	
	EU15	EU28
Bull	+0.6%	+1.0%
Bullock	-2.0%	-2.0%
Cow	+3.3%	+2.5%
Heifer	+7.5%	+6.9%
Calve	+1.1%	+0.9%
Young cattle	-2.0%	-2.1%
Meat of bovine animals	+2.1%	+1.9%

Estimates for last month of period IT



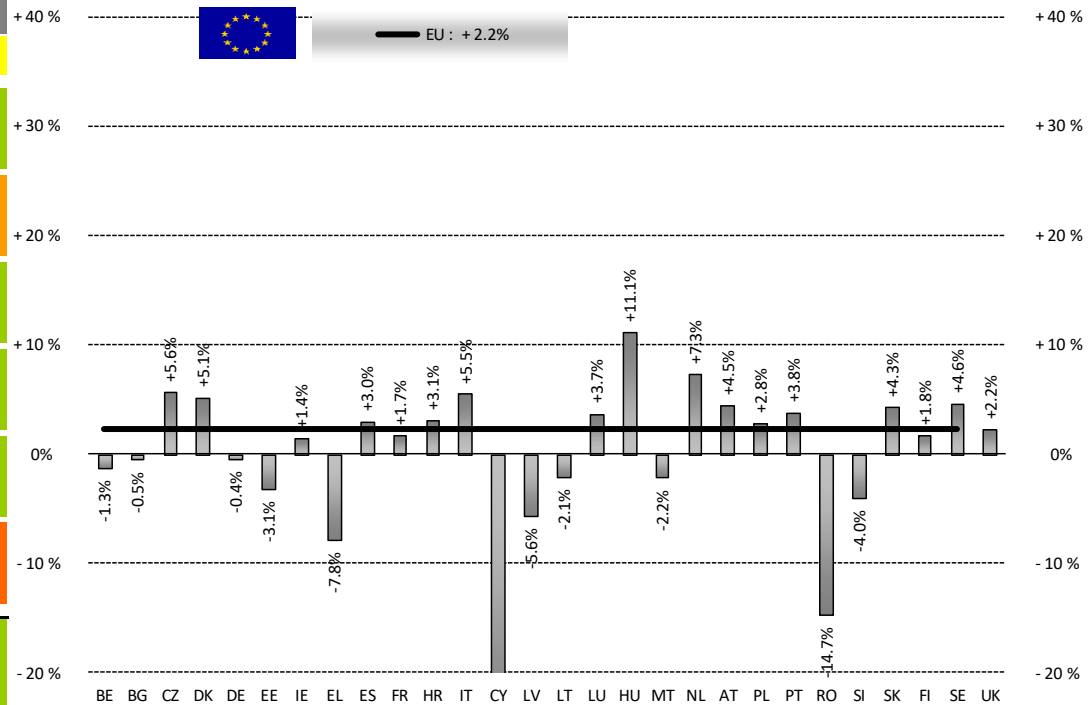
Source : Estat - Newcronos

PRODUCTION

% EVOLUTION TONNES

TONNES	Jan-Oct 18/17	
	EU15	EU28
Bull	+0.2%	+0.7%
Bullock	-2.2%	-2.3%
Cow	+4.5%	+3.8%
Heifer	+8.5%	+7.9%
Calve	+1.2%	+1.1%
Young cattle	-4.7%	-5.2%
Meat of bovine animals	+2.4%	+2.2%

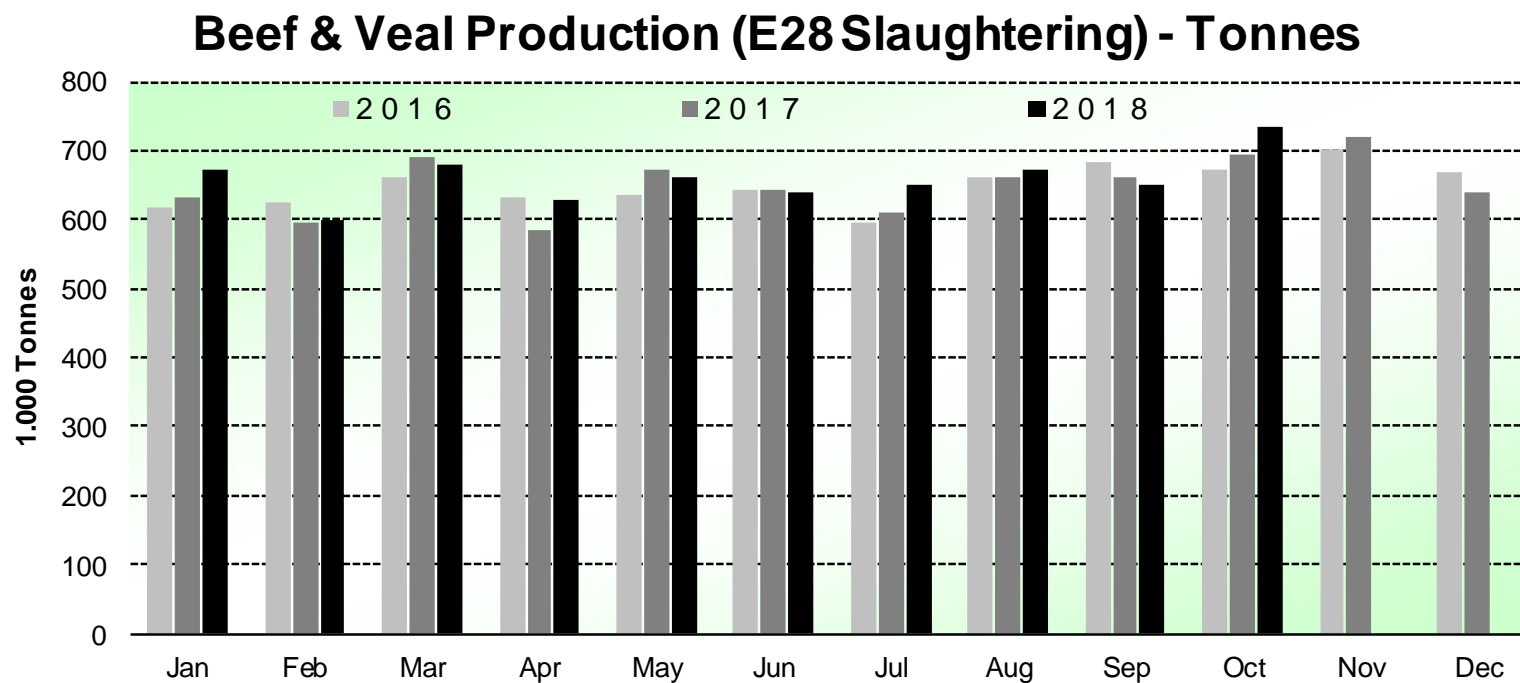
Estimates for last month of period IT



Source : EStat - Newcronos

PRODUCTION

HISTORIC TONNES



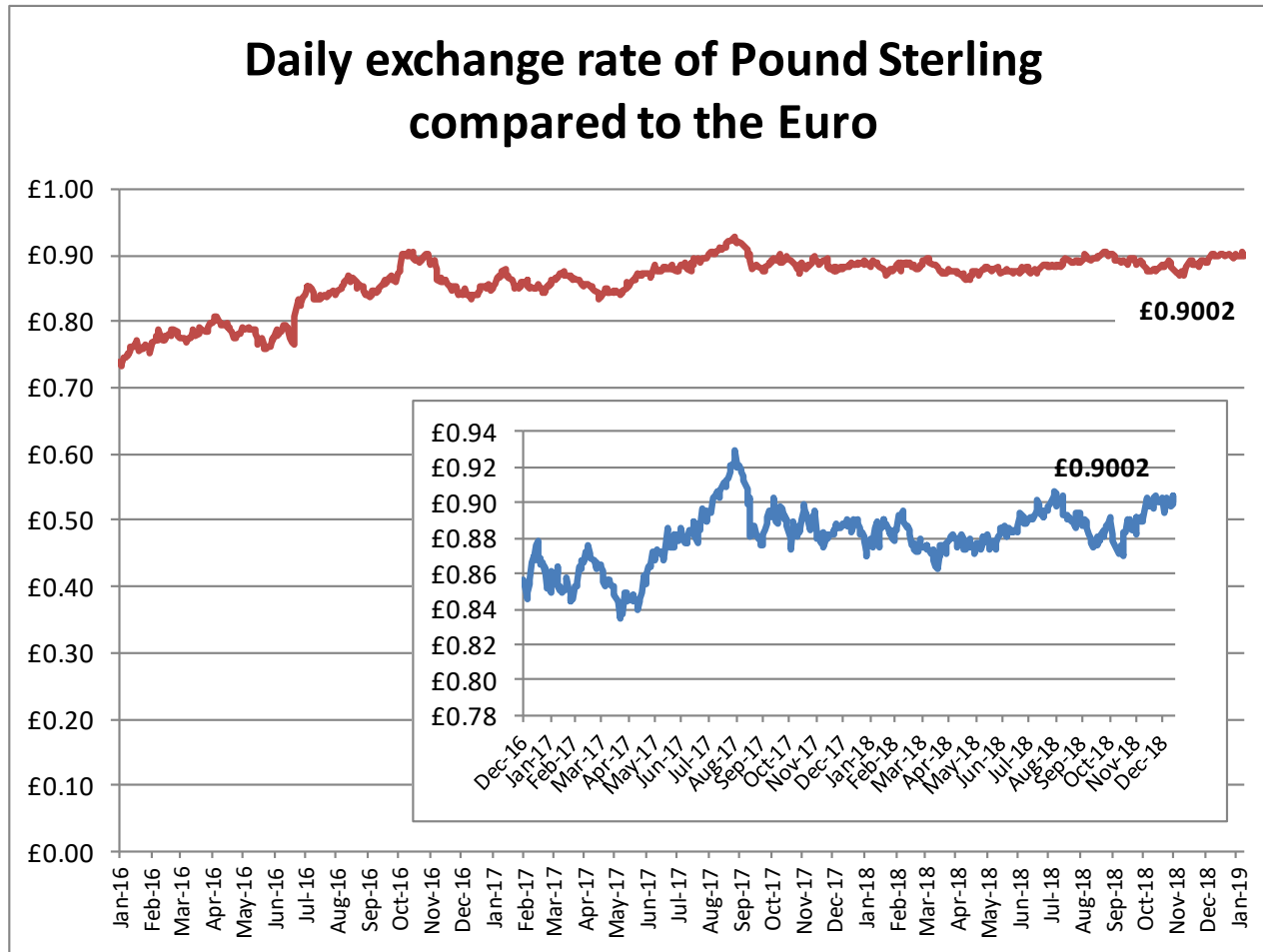
Source : EStat-Newcronos

PRICES CARCASSES

EU Prices week		2	Evolution since last week	Evolution since last month	Evolution since last year
Carcasse	Average A/C/Z -R3	375.1	- 0.5%	- 0.1%	- 3.6%
	Young Bovines (Z)	371.4	+ 0.4%	- 1.0%	+ 0.4%
	Young Bulls (A)	377.1	- 0.3%	+ 0.7%	- 4.0%
	Steers (C)	383.8	- 0.3%	- 1.2%	- 4.9%
	Cows (D)	275.9	+ 0.8%	+ 3.3%	- 6.7%
	Heifers (E)	381.5	- 0.1%	+ 0.3%	- 2.3%
Live Animals	Male Calves Dairy Type	84.66	- 2.2%	+ 5.3%	- 2.9%
	Male Calves Beef Type	205.1	+ 5.3%	+ 6.2%	+ 5.3%
	Young Store Cattle	2.37	+ 0.7%	+ 3.5%	+ 1.0%
	Yearling Male Store Cattle	2.25	+ 0.7%	+ 2.6%	- 1.3%
	Yearling Female Store Cattle	2.33	- 1.2%	+ 2.5%	+ 0.5%
	Calves slaughtered <8M	520.7	+ 0.2%	- 0.5%	- 4.6%

Sources : MSs notifications (Regulation (EU) 1182/2017 and 1184/2017)

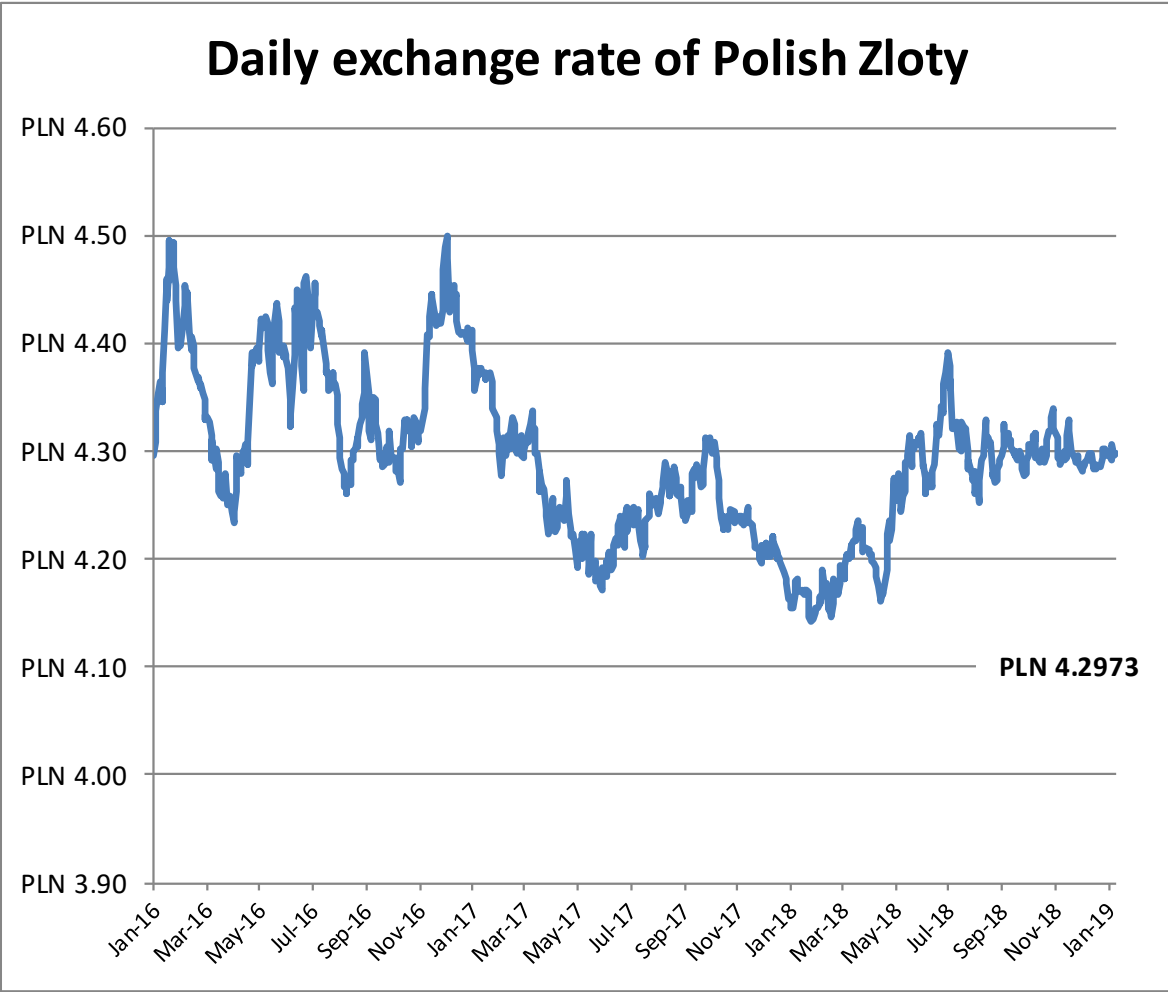
EXCHANGE RATE INDEX / Euro



Source : ECB

24 January 2019

EXCHANGE RATE INDEX / Euro

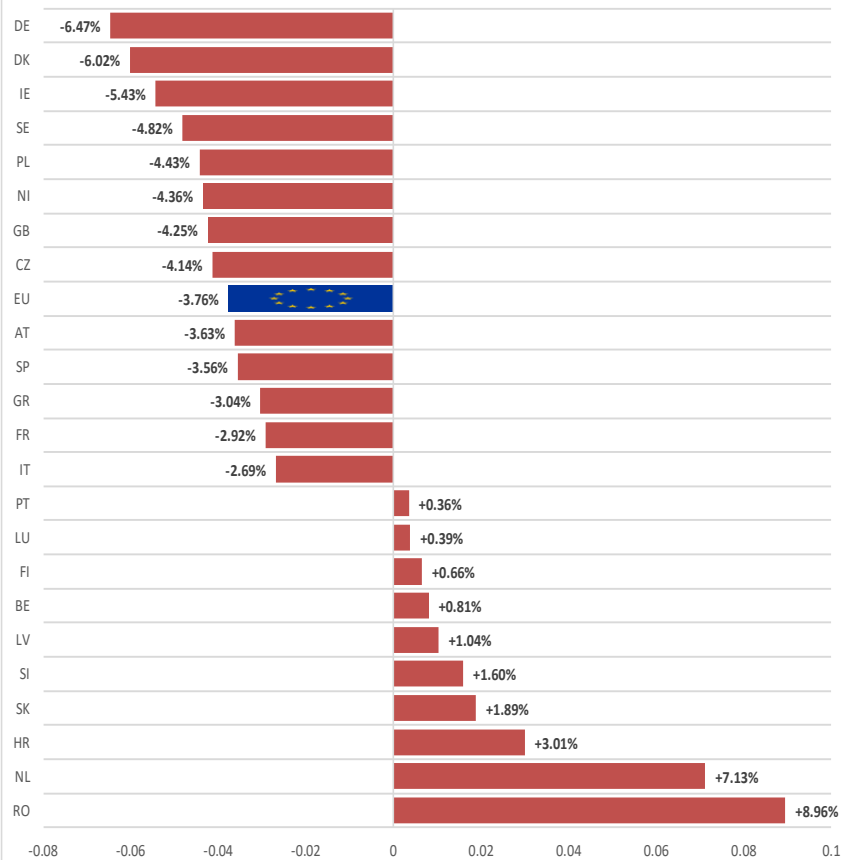


24 January 2019

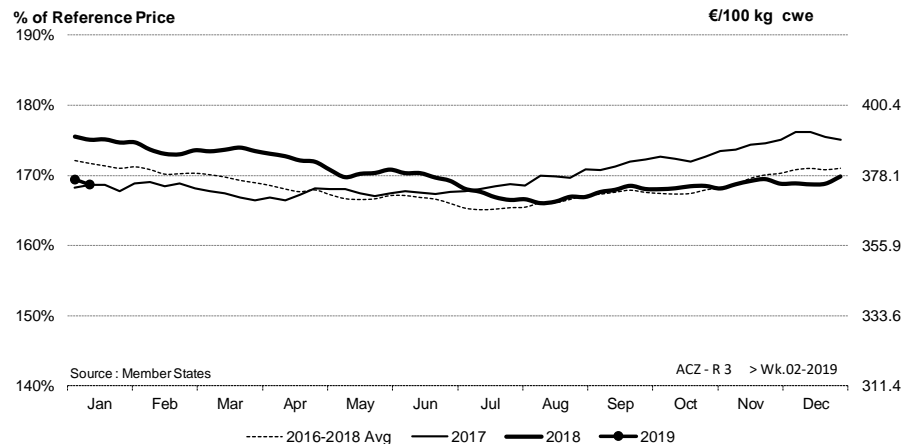
PRICES CARCASSES

EU EVOLUTION A/C/Z.R3

EU ACZ R3 Price Evolution in December 2018 compared to December 2017



ACZ - R3 > Wk.02-2019

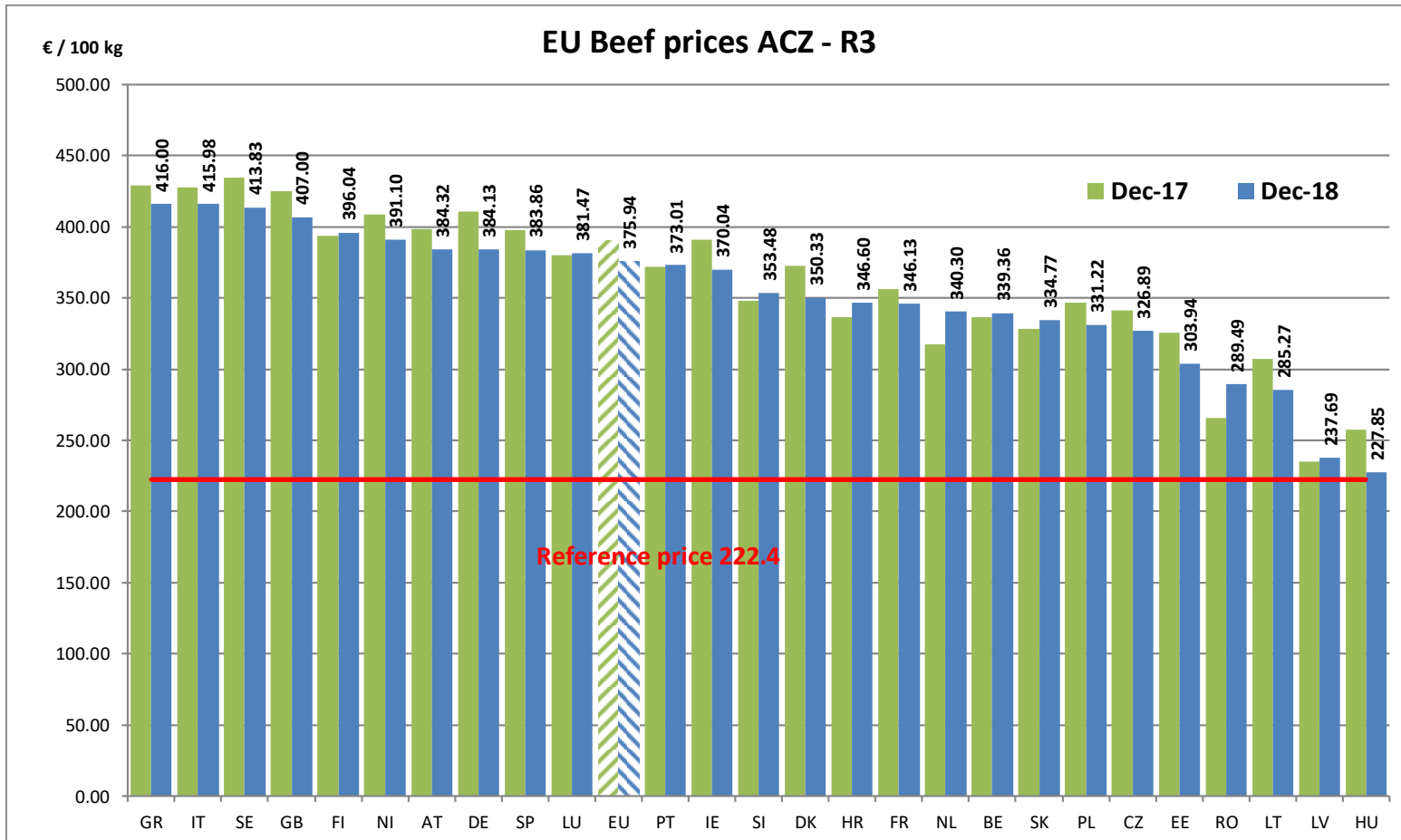


Price in week 02 :	375.13	Average price in December 2018 :	375.93
% change y/y :	-3.6%	% change y/y :	-3.8%
% Ref. Price in wk 2 :	168.7%		

24 January 2019

PRICES CARCASSES

EU EVOLUTION A/C/Z.R3

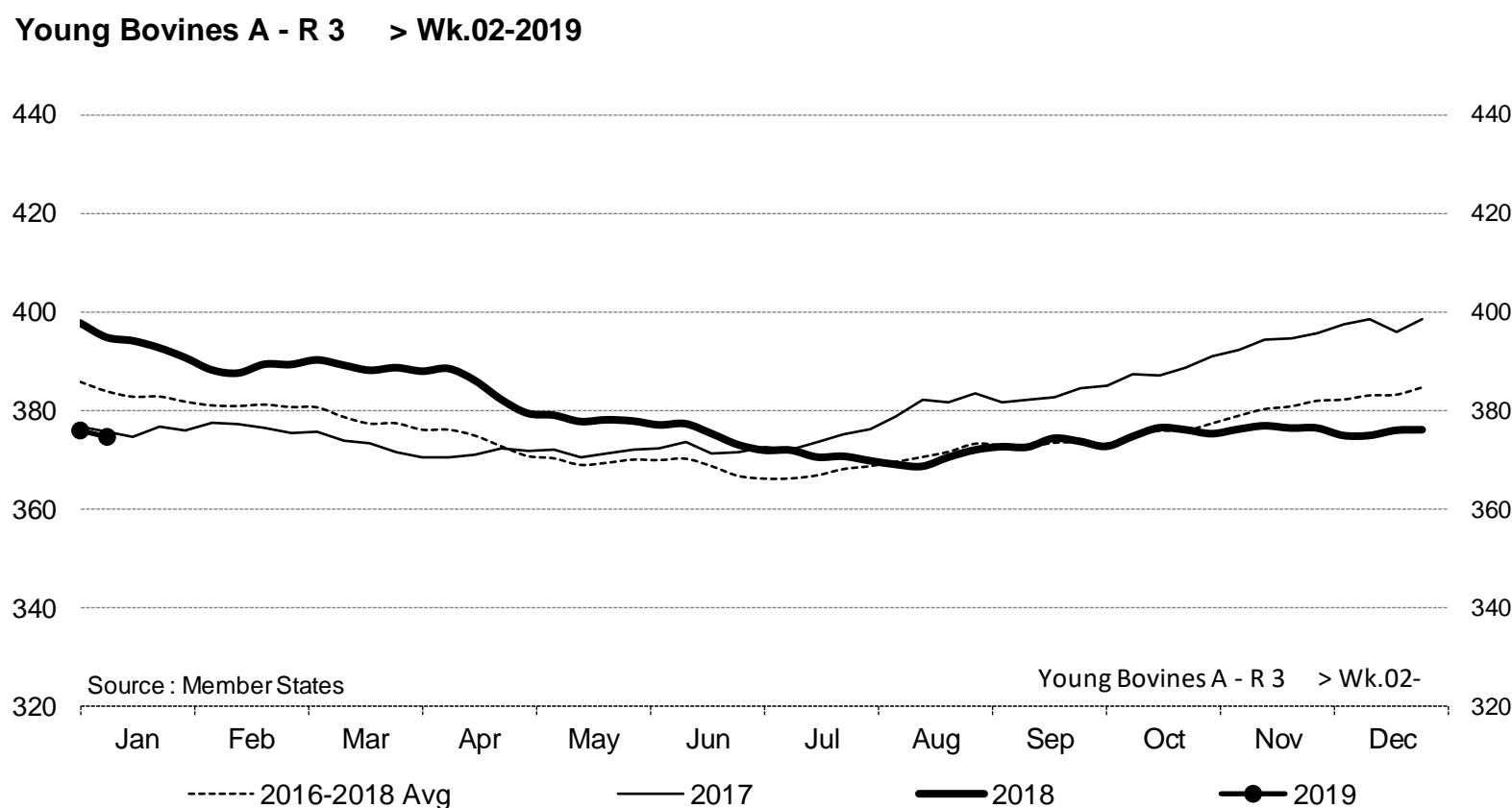


24January 2019

PRICES CARCASSES

EU EVOLUTION YOUNG BULL - A.R3

Young Bovines A - R 3 > Wk.02-2019



Price in week 02 :	374.68	Average price in December 2018 :	375.66
% change y/y :	- 5.1%	% change y/y :	- 5.5%

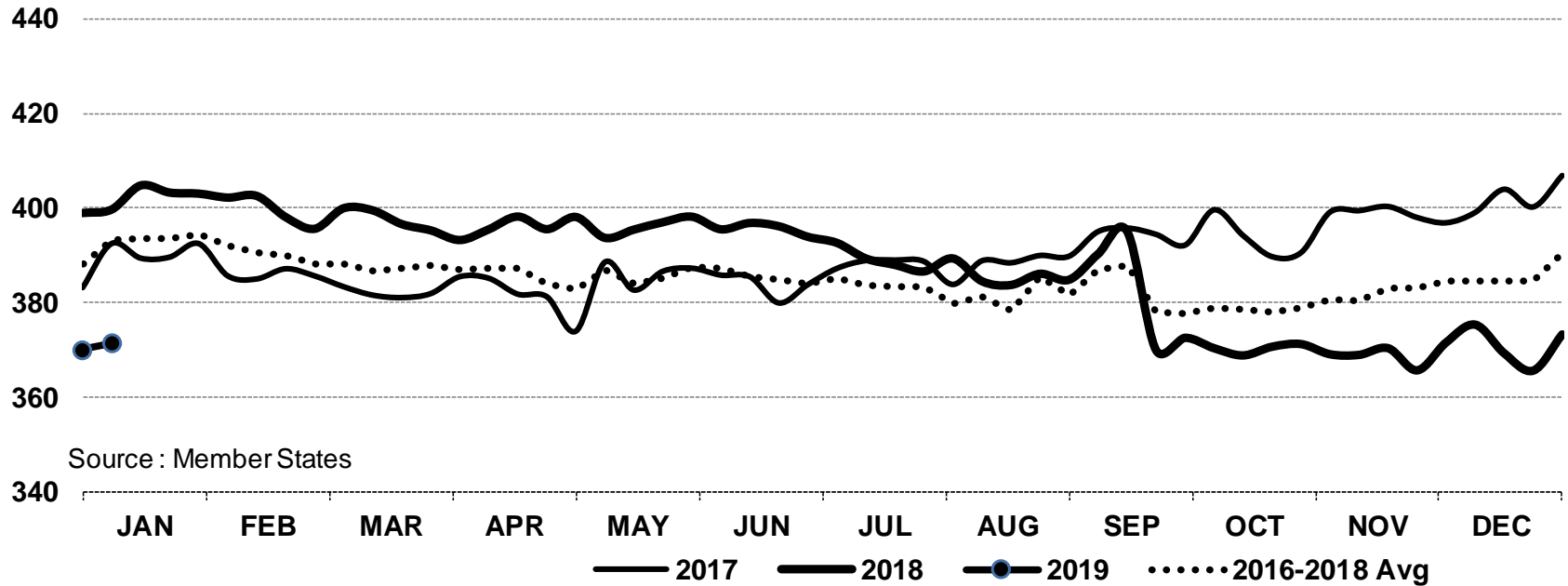
24January 2019

PRICES CARCASSES

E.U. EVOLUTION YOUNG BOVINE 8-12M- Z.R3

In € / 100 kg

Young Bovines 8-12m Z - R 3 > Wk.02-2019



Price in week 02 : **371.48** 13/12/2018
 % change y/y : **- 7.1%**

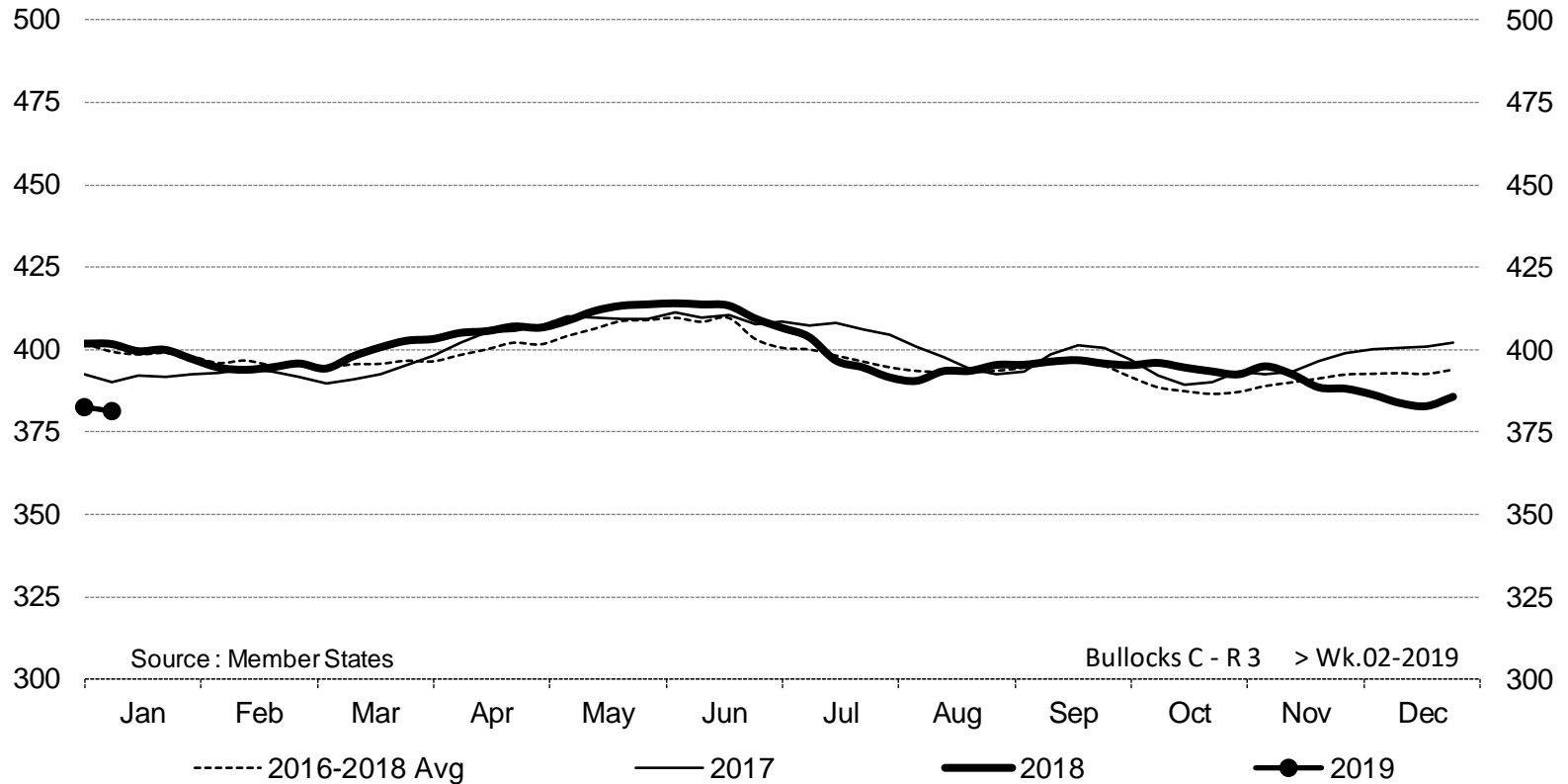
Average price in December 2018 : **370.84**
 % change y/y : **- 7.8%**

24 January 2019

PRICES CARCASSES

E.U. EVOLUTION STEER - C.R3

Bullocks C - R 3 > Wk.02-2019



Price in week 02 : **381.26**
% change y/y : **- 5.1%**

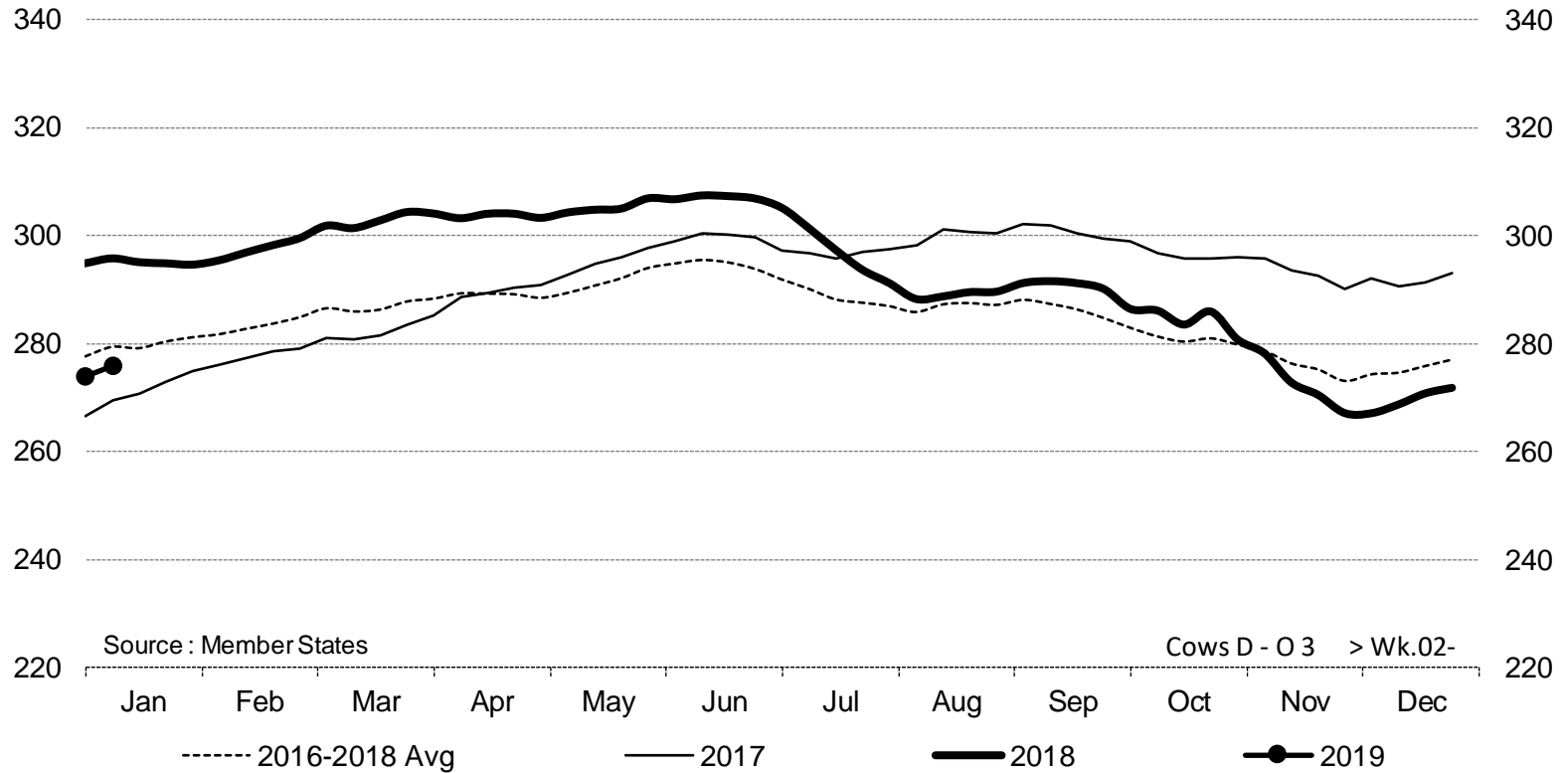
Average price in December 2018 : **384.92**
% change y/y : **- 3.9%**

24January 2019

PRICES CARCASSES

E.U. EVOLUTION COW - D.03

Cows D - O 3 > Wk.02-2019



Price in week 02 : **275.98**
% change y/y : **- 6.7%**

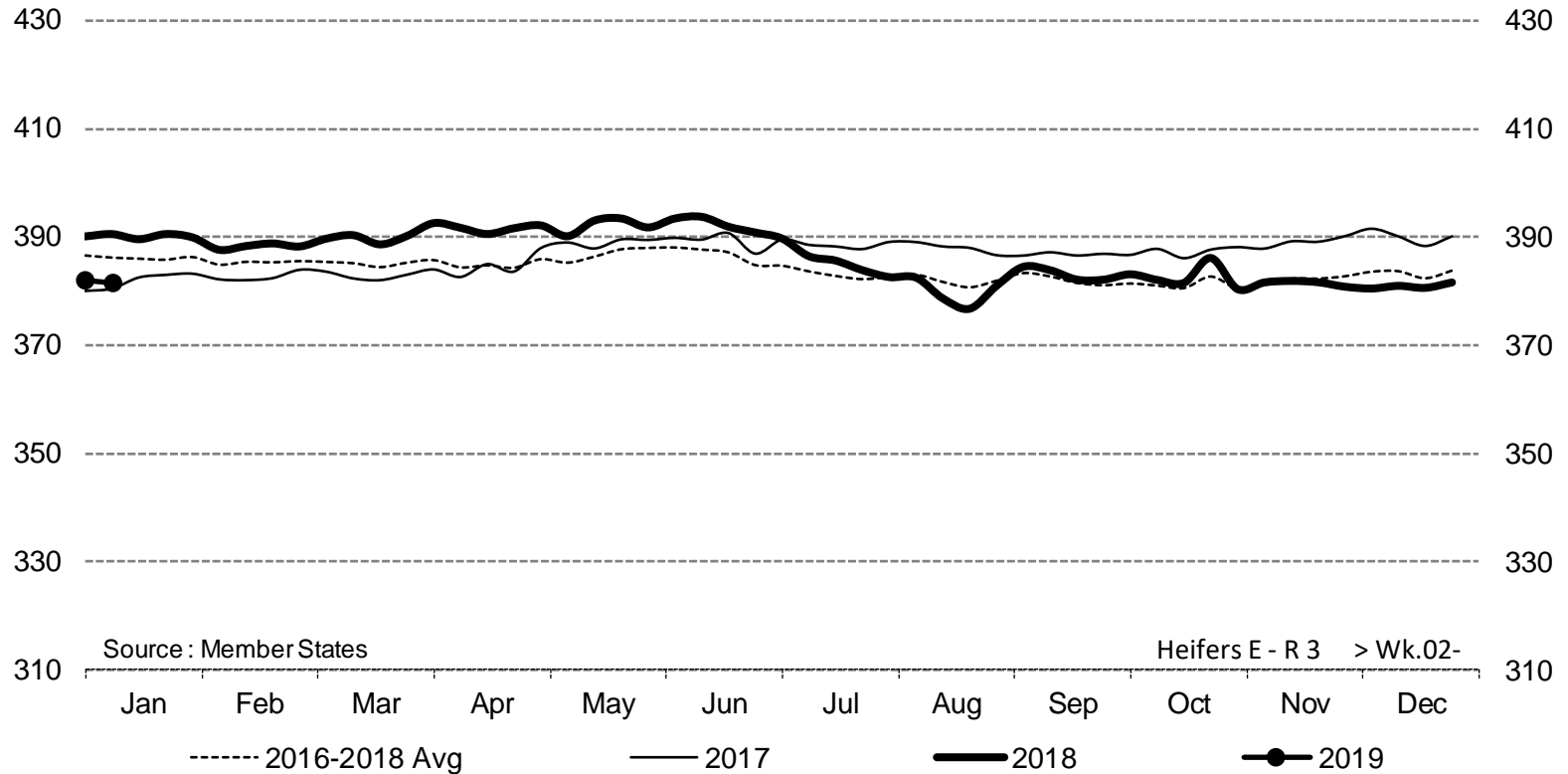
Average price in December 2018 : **269.67**
% change y/y : **- 7.5%**

24January 2019

PRICES CARCASSES

EU EVOLUTION HEIFER - E.R3

Heifers E - R 3 > Wk.02-2019



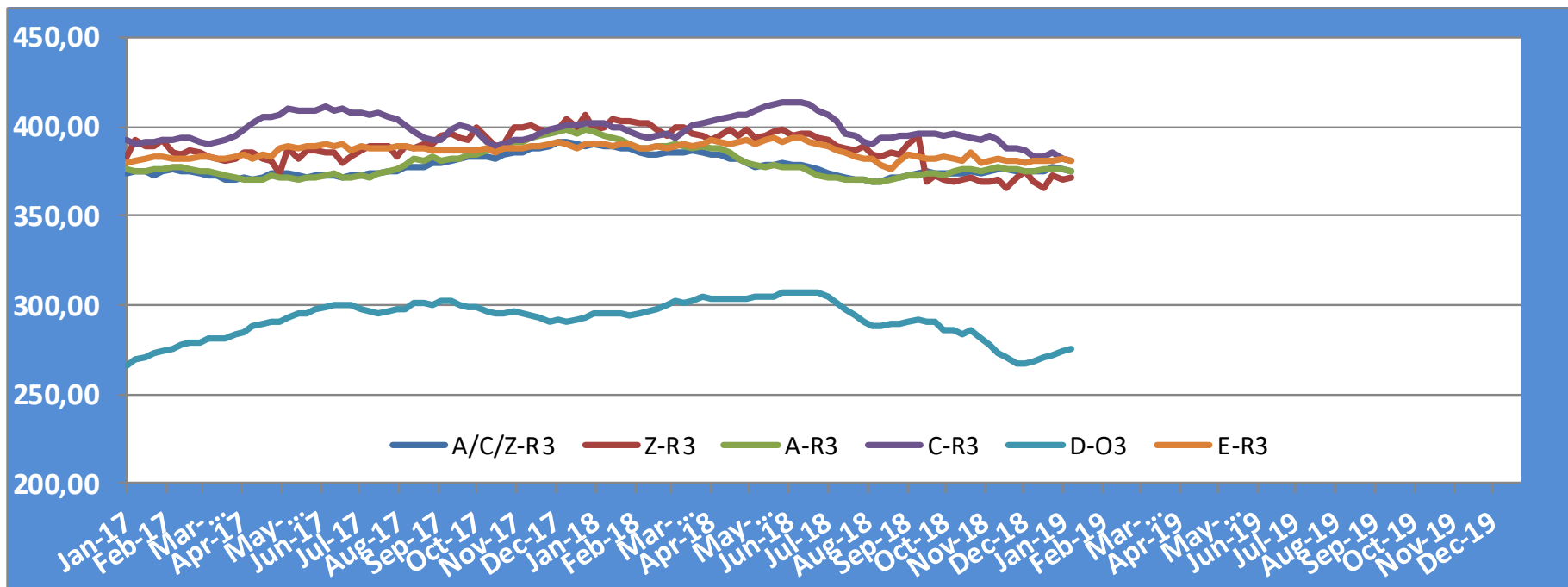
Price in week 02 : **381.55**
% change y/y : **- 2.3%**

Average price in December 2018 : **380.91**
% change y/y : **- 2.3%**

24January 2019

PRICES CARCASSES

EU EVOLUTION ALL CAT GLOBAL VIEW

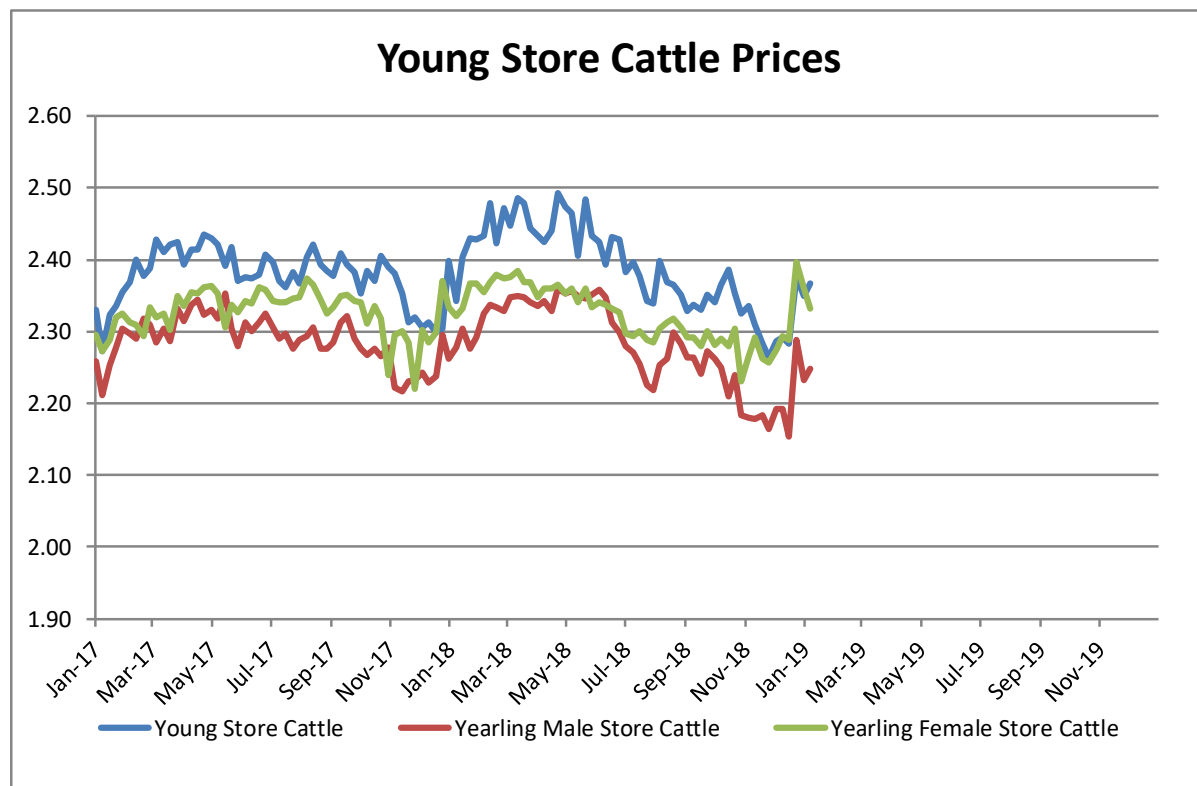


24 January 2019

PRICES LIVE BOVINES

EU EVOLUTION STORE CATTLE

Store cattle (€/100 kg live weight)



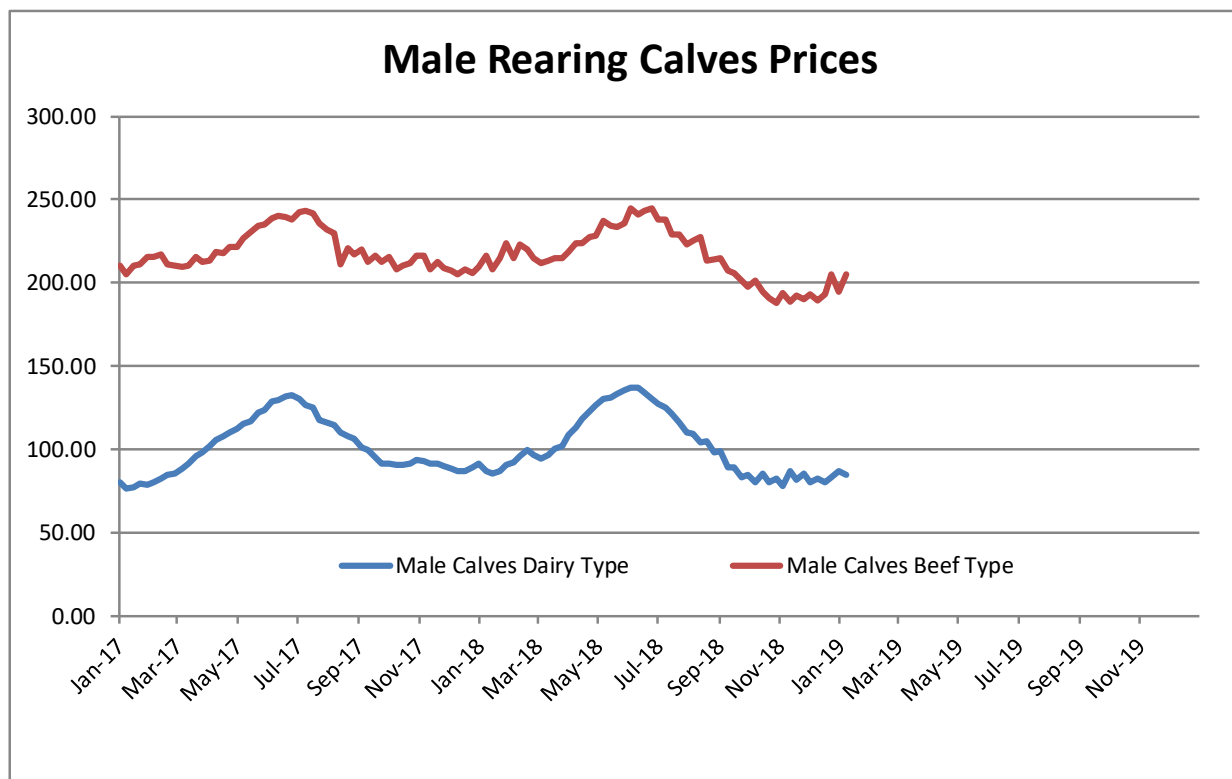
Young Store Cattle Price in	Week 2	2.37	Yearling Male Store Cattle Price	2.25
	Change y/y	+1.04%	Change y/y	-1.32%
Yearling Female Store Cattle Price		2.33		
	Change y/y	+0.47%		

24January 2019

PRICES LIVE BOVINES

EU EVOLUTION Male Calves – 8D4W

Male calves aged between 8 days and 4 weeks (€/head)



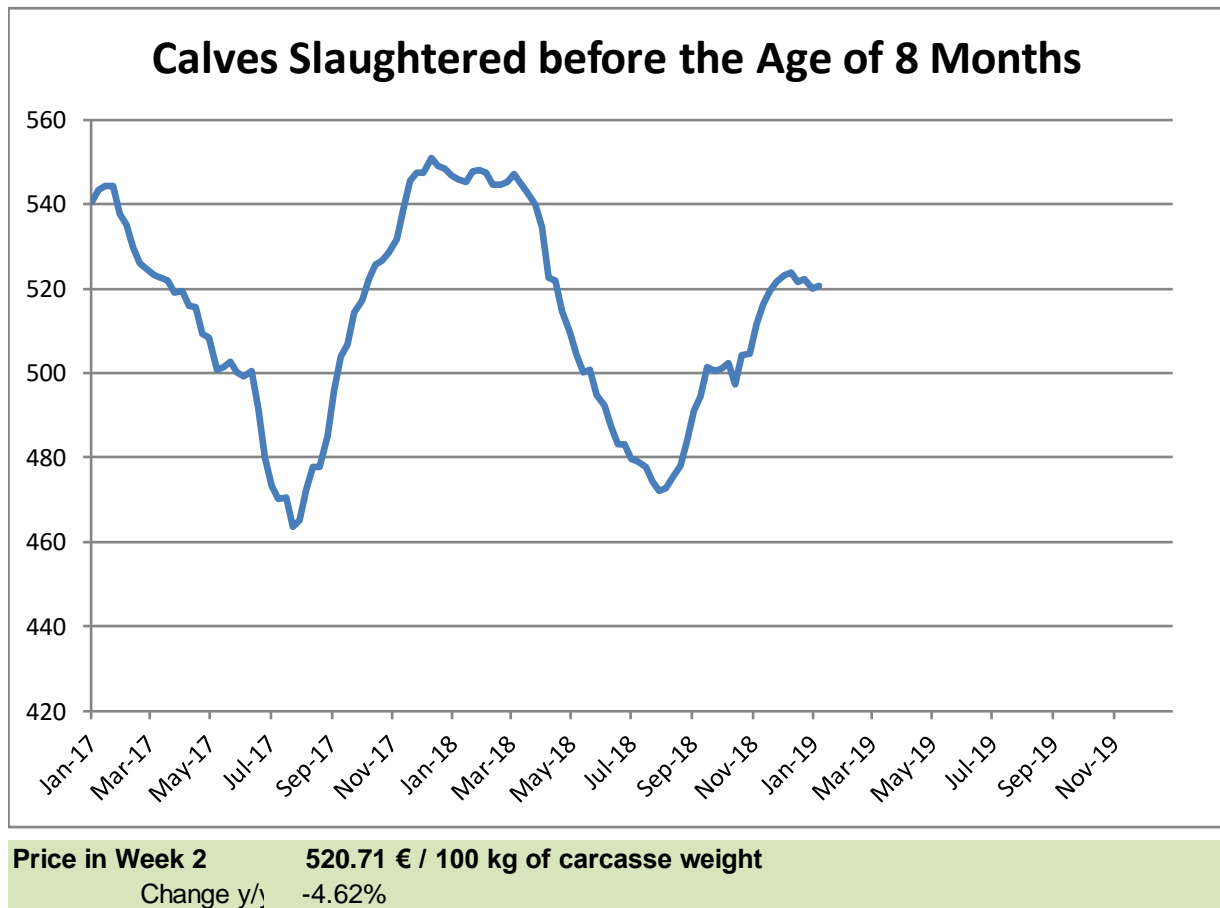
Male Rearing Calves Beef type			Male Rearing Calves Dairy type		
Price in	Week 2	205.14	Price in	Week 2	84.66
Change	y/y	-5.27%	Change	y/y	-2.90%

24 January 2019

PRICES LIVE BOVINES

EU EVOLUTION Butcher Calves

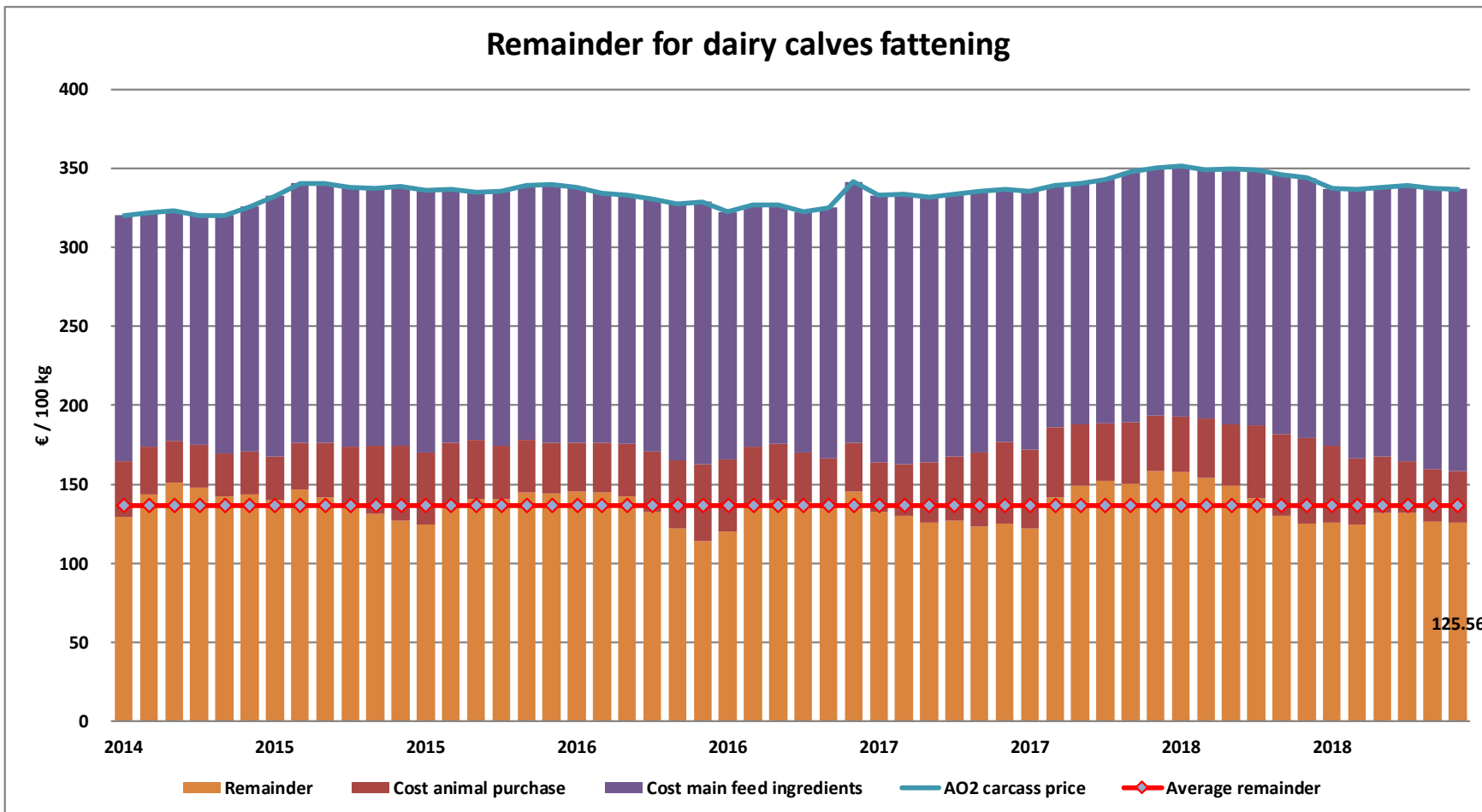
Calves slaughtered before the age of less than 8 months
(€/100 kg cw)



24January 2019

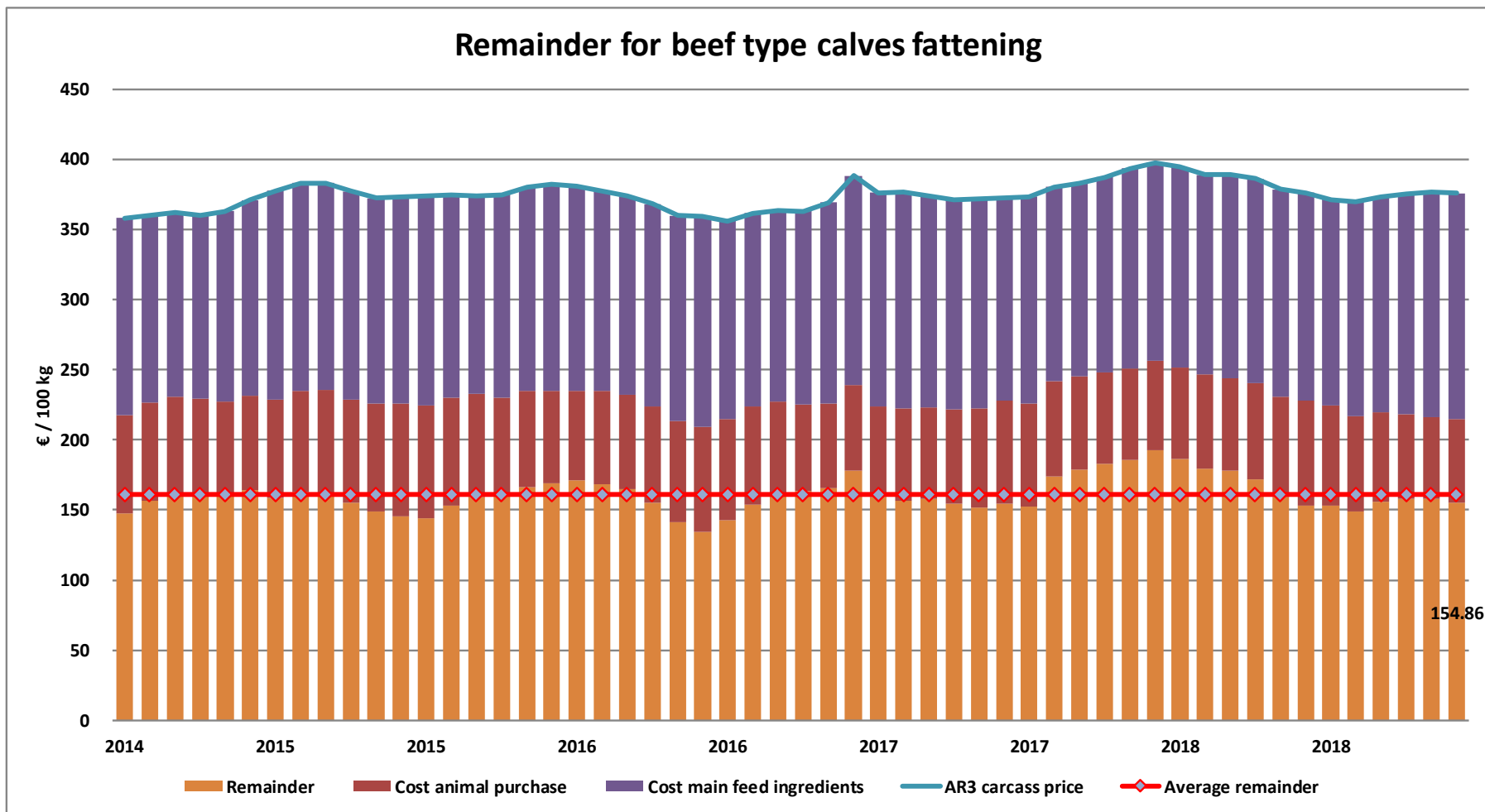
REMAINDERS

Remainder for dairy calves fattening



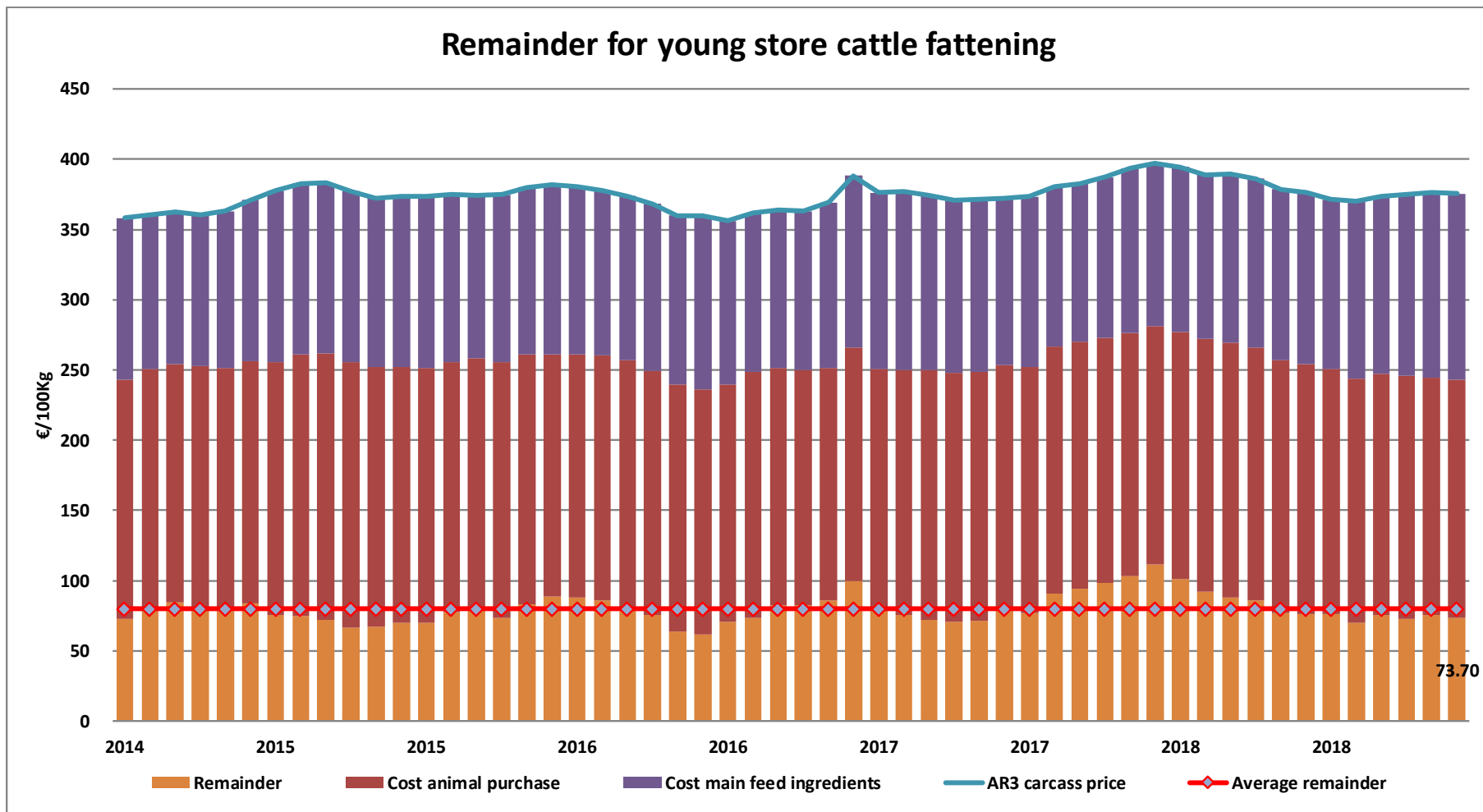
24 January 2019

REMAINDERS



24 January 2019

REMAINDERS



24 January 2019

Forecast Summary

	2016	2017	2018	2019
EU.15 PRODUCTION (1000T)	+ 2.35% 6 966	- 0.76% 6 913	+ 1.14% 6 992	- 2.15% 6 842
EU.15 CONSUMPTION (1000T)	+ 0.85% 6 745	- 1.29% 6 658	+ 1.20% 6 738	- 0.33% 6 715
BALANCE	221	256	255	127
EU.13 PRODUCTION (1000T)	+ 7.14% 832	+ 5.96% 882	+ 5.84% 933	+ 1.72% 950
EU.13 CONSUMPTION (1000T)	+ 6.32% 435	+ 4.67% 455	+ 5.57% 480	+ 2.61% 493
BALANCE	398	427	453	457
EU.28 PRODUCTION (1000T)	+ 2.84% 7 798	- 0.04% 7 795	+ 1.68% 7 926	- 1.69% 7 792
EU.28 CONSUMPTION (1000T)	+ 1.17% 7 180	- 0.93% 7 113	+ 1.48% 7 218	- 0.13% 7 208
BALANCE	619	683	708	583
EU - CARCASS PRICES	2016	2017	2018	2019
ADULT MALE BOVINES (€/100 kg)	- 4.4% 370.9	+ 2.40% 379.8	- 0.44% 378.1	- 0.36% 376.7
COWS (€/100 kg)	- 7.8% 269.0	+ 6.53% 286.5	+ 2.15% 292.7	- 1.32% 288.9

Sources : EStat New Cronos, Member States

24January 2019

TRADE

EU EXPORTS

Beef & Live Animals

EU exports of beef and live animals (1): Trade figures (COMEXT – tonnes cwe)

Destinations	2014		2015		2016		2017		Jan-Nov 18		Compared to Jan-Nov 17
	tonnes	%	tonnes	%	tonnes	%	tonnes	%	tonnes	%	
Turkey	8 098	1.4%	57 504	9.6%	71 030	10.1%	95 932	12.6%	92 588	13.6%	+ 9.3%
Hong Kong	65 222	11.6%	45 198	7.5%	58 383	8.3%	90 659	11.9%	66 625	9.8%	- 20.1%
Israel	8 353	1.5%	18 851	3.1%	41 535	5.9%	44 196	5.8%	43 348	6.4%	+ 7.1%
Lebanon	37 994	6.8%	50 263	8.4%	47 033	6.7%	38 554	5.0%	39 435	5.8%	+ 11.9%
Ghana	33 311	5.9%	39 225	6.6%	39 680	5.6%	41 007	5.4%	36 907	5.4%	- 3.8%
Bosnia-Herz.	34 104	6.1%	39 896	6.7%	38 875	5.5%	34 711	4.5%	35 528	5.2%	+ 9.9%
Ivory Coast	29 013	5.2%	36 018	6.0%	37 210	5.3%	38 582	5.1%	34 950	5.1%	- 1.1%
Algeria	18 499	3.3%	16 085	2.7%	25 004	3.5%	26 305	3.4%	30 777	4.5%	+ 25.7%
Philippines	11 839	2.1%	13 052	2.2%	24 454	3.5%	38 271	5.0%	26 856	3.9%	- 25.8%
Libya	14 280	2.5%	19 691	3.3%	29 723	4.2%	27 848	3.6%	26 560	3.9%	+ 3.3%
Switzerland	26 633	4.8%	26 015	4.3%	25 599	3.6%	27 370	3.6%	23 289	3.4%	- 10.3%
Russia	96 928	17.3%	13 546	2.3%	16 433	2.3%	22 989	3.0%	16 536	2.4%	- 19.8%
Chile	27	0.0%	50	0.0%	2 228	0.3%	8 961	1.2%	14 497	2.1%	+ 83.5%
South Africa	1 325	0.2%	7 508	1.3%	7 335	1.0%	7 569	1.0%	11 611	1.7%	+ 65.5%
Angola	14 587	2.6%	9 670	1.6%	13 550	1.9%	11 159	1.5%	11 361	1.7%	+ 17.5%
Morocco	7 652	1.4%	4 703	0.8%	7 517	1.1%	10 015	1.3%	9 965	1.5%	+ 13.6%
Ukraine	2 922	0.5%	2 859	0.5%	7 875	1.1%	7 331	1.0%	9 558	1.4%	+ 41.1%
Other Destinations	149 227	26.6%	198 581	33.2%	213 243	30.2%	192 295	25.2%	149 925	22.0%	
Extra-EU	560 014		598 715		706 705		763 753		680 319		
% change			+ 7%		+ 18%		+ 8%		- 3.3%		

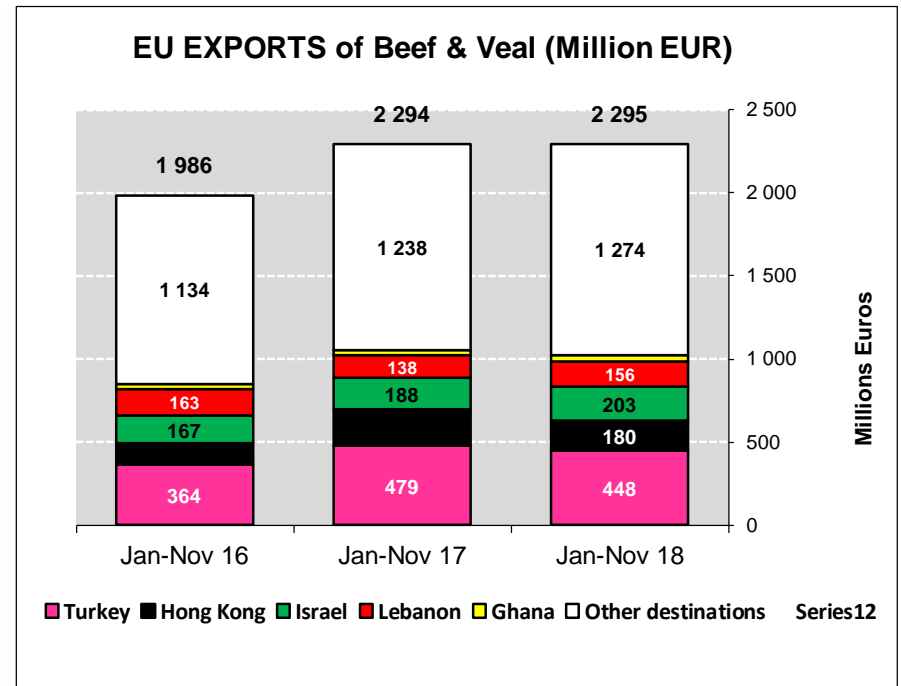
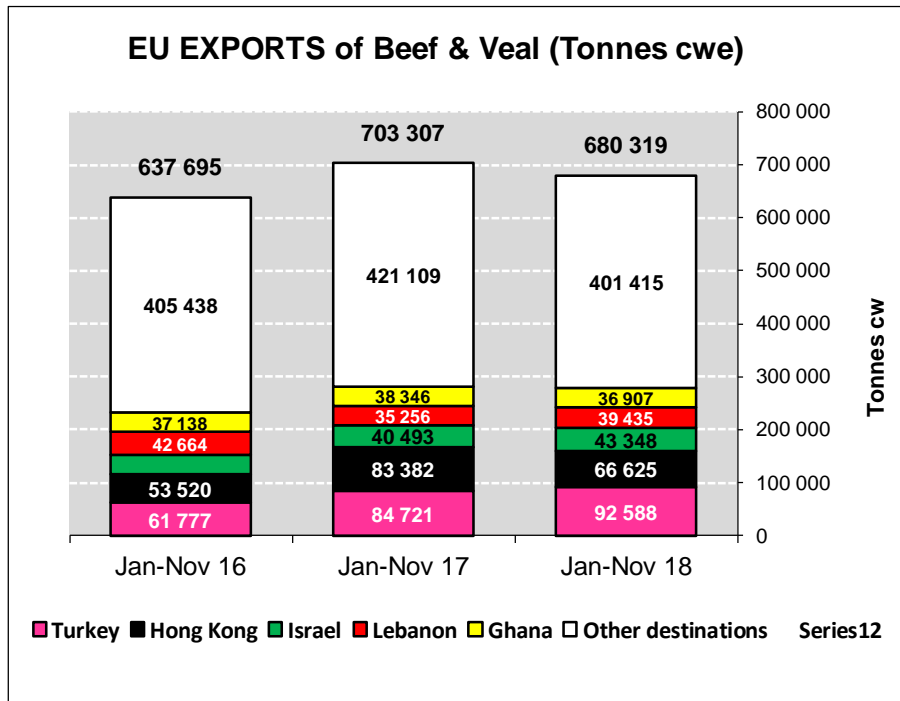
EU exports of beef: Trade figures (COMEXT – tonnes cwe)

Destinations	2014		2015		2016		2017		Jan-Nov 18		Compared to Jan-Nov 17
	tonnes	%	tonnes	%	tonnes	%	tonnes	%	tonnes	%	
Hong Kong	28 573	8.2%	65 112	14.6%	45 198	10.8%	58 416	12.1%	66 625	14.4%	- 20.1%
Ghana	40 878	11.8%	33 255	7.5%	37 364	8.9%	35 340	7.3%	36 907	8.0%	- 3.8%
Turkey	559	0.2%	1 280	0.3%	9 482	2.3%	10 751	2.2%	35 444	7.6%	+++
Ivory Coast	21 619	6.2%	28 839	6.5%	35 740	8.5%	36 713	7.6%	34 950	7.5%	- 1.1%
Bosnia-Herz.	21 870	6.3%	31 821	7.1%	36 593	8.7%	36 850	7.6%	33 042	7.1%	+ 10.2%
Philippines	2 534	0.7%	11 630	2.6%	13 053	3.1%	24 247	5.0%	26 856	5.8%	- 25.8%
Switzerland	25 817	7.4%	25 730	5.8%	25 009	6.0%	24 435	5.1%	22 281	4.8%	- 10.4%
Israel	4 224	1.2%	3 855	0.9%	6 087	1.5%	15 137	3.1%	20 064	4.3%	+ 17.5%
Chile	1	0.0%	27	0.0%	50	0.0%	2 228	0.5%	14 497	3.1%	+ 83.5%
Algeria	3 135	0.9%	4 227	0.9%	6 662	1.6%	10 726	2.2%	12 658	2.7%	+ 4.8%
South Africa	3 339	1.0%	1 325	0.3%	7 481	1.8%	7 361	1.5%	11 611	2.5%	+ 65.5%
Angola	10 589	3.0%	14 587	3.3%	9 643	2.3%	13 549	2.8%	11 361	2.4%	+ 17.5%
For.JRep.Mac	10 315	3.0%	10 994	2.5%	12 375	3.0%	11 451	2.4%	9 236	2.0%	- 10.9%
Ukraine	2 870	0.8%	2 498	0.6%	2 747	0.7%	7 094	1.5%	8 989	1.9%	+ 39.2%
Vietnam	3 175	0.9%	6 410	1.4%	11 627	2.8%	22 252	4.6%	8 448	1.8%	- 38.1%
Norway	10 217	2.9%	7 872	1.8%	19 122	4.6%	18 315	3.8%	7 489	1.6%	- 40.6%
China	7 228	2.1%	8 242	1.9%	6 027	1.4%	10 804	2.2%	6 345	1.4%	+ 9.1%
Other Destinations	150 312	43.3%	187 568	42.1%	134 124	32.1%	136 176	28.3%	97 194	20.9%	
Extra-EU	347 252		445 272		418 383		481 846		463 999		
% change			+ 28%		- 6%		+ 15%		- 5.3%		

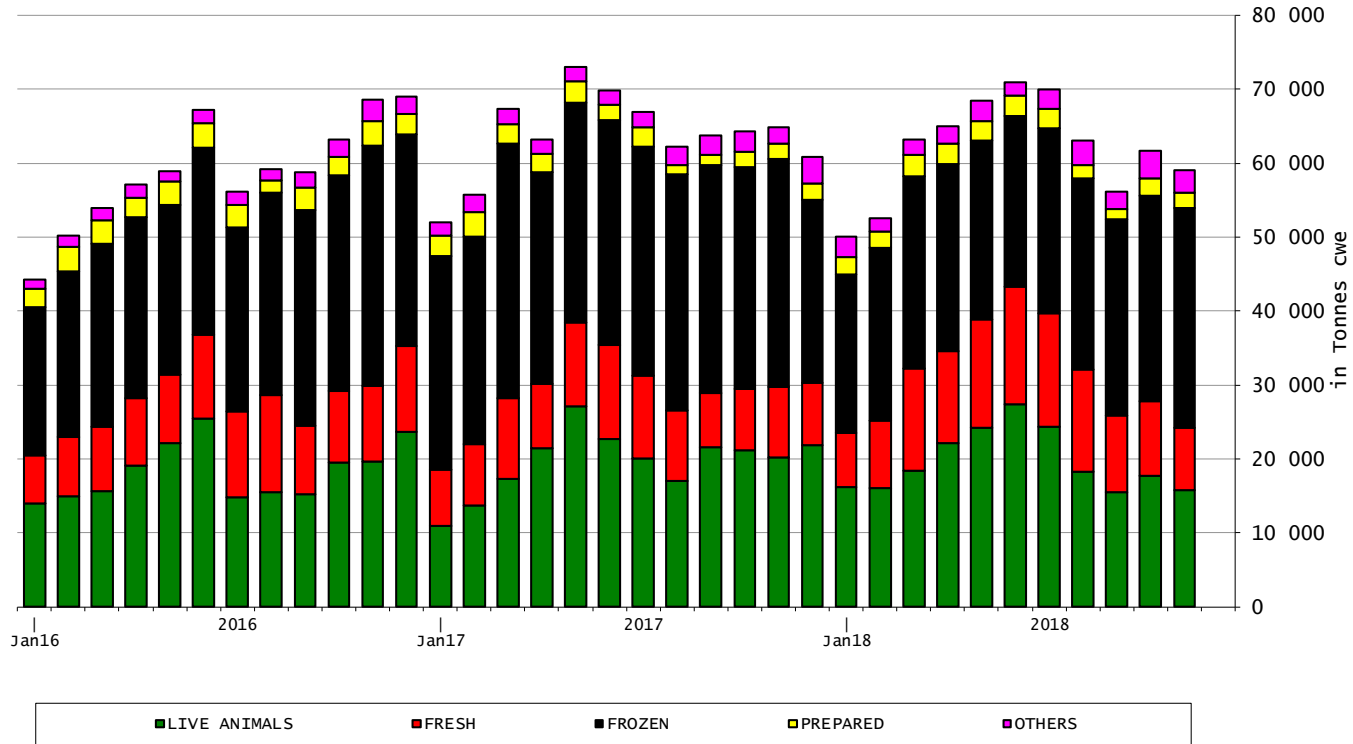
TRADE

EU EXPORTS Beef & Live Animals

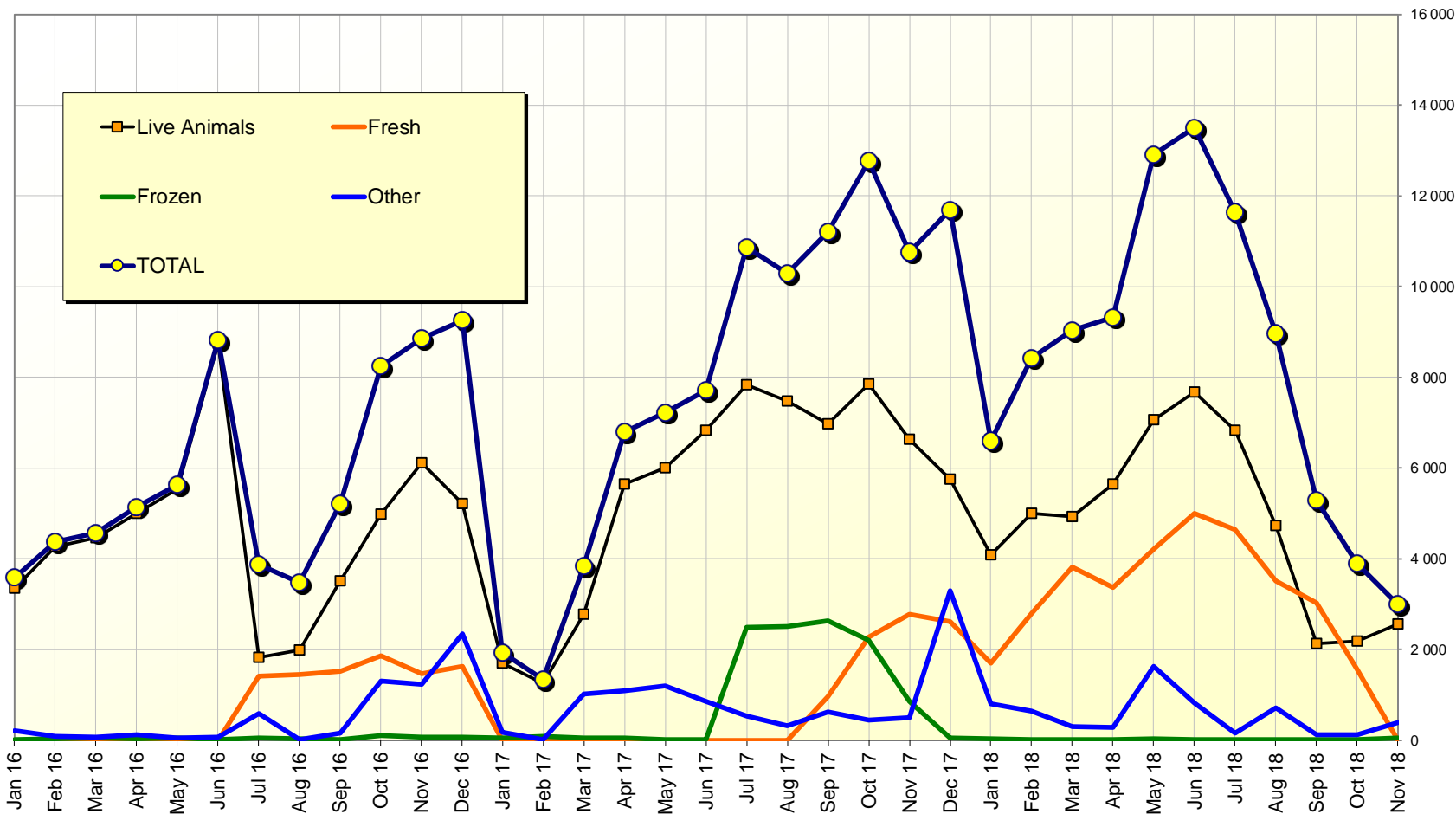
EU exports of beef and live animals: Trade figures (COMEXT)



EU-28 Exports of BEEF products

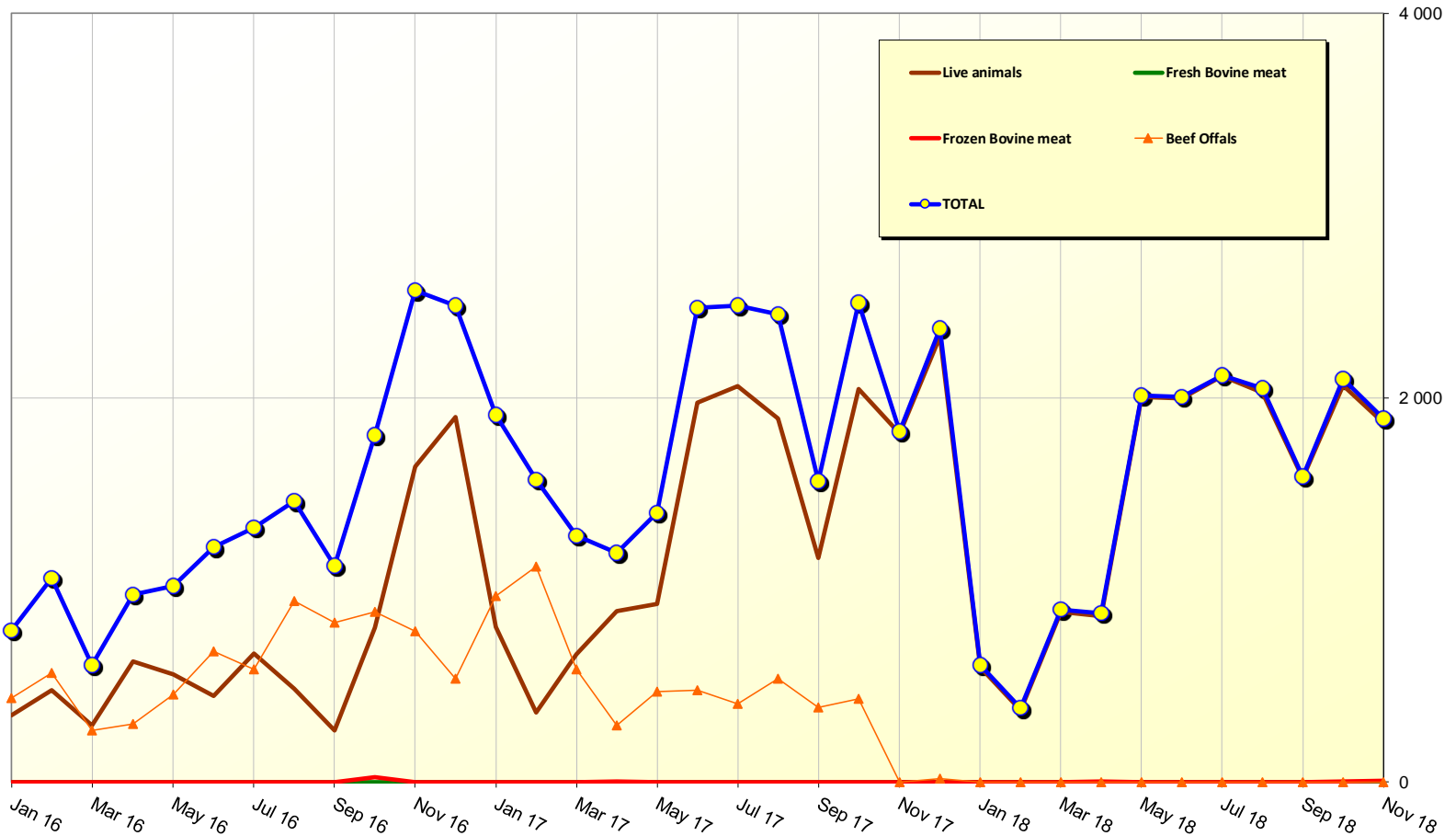


EU beef Exports to TURKEY
Trade figures (COMEXT data) *tonnes cwe*



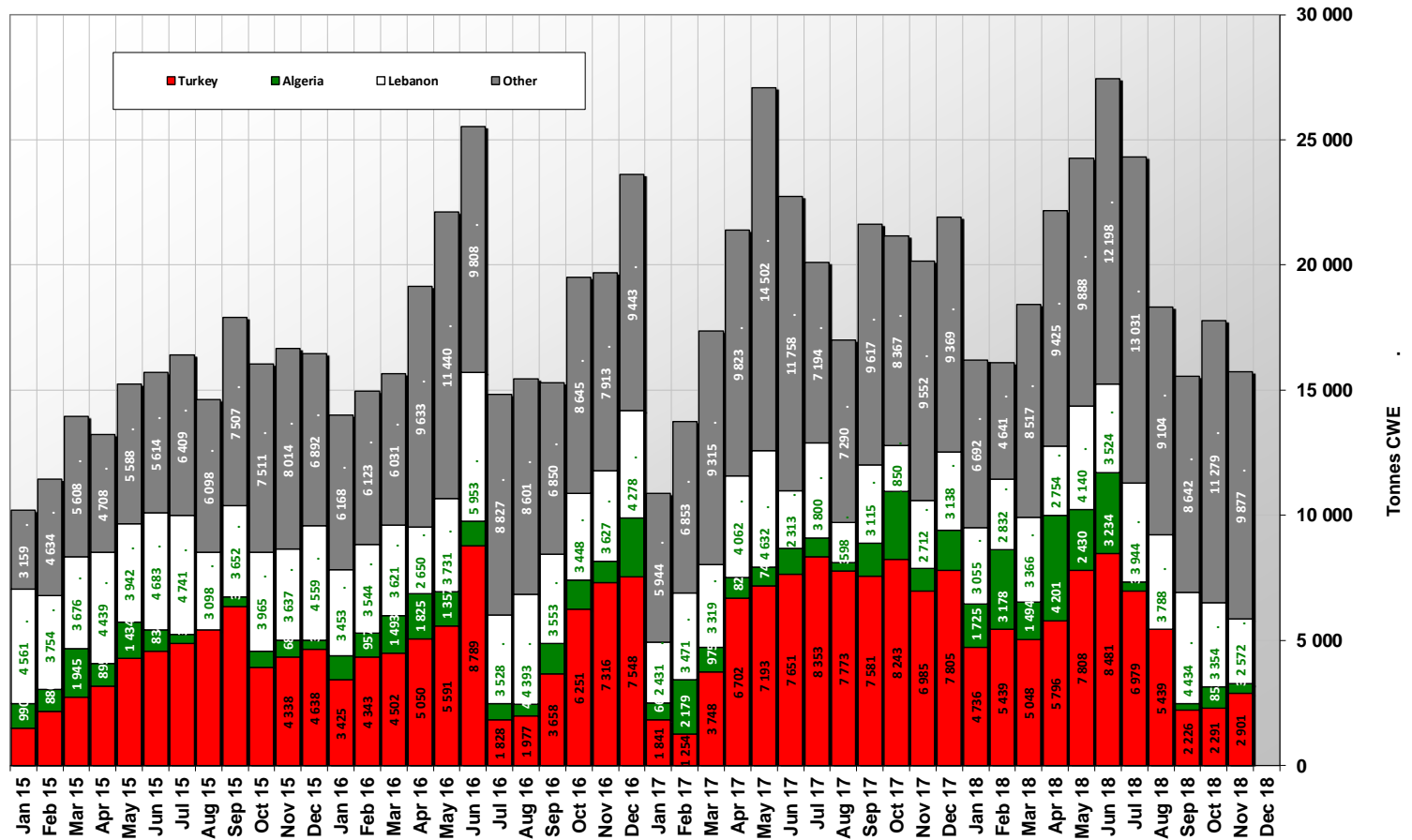
24 January 2019

EU beef Exports to RUSSIA
Trade figures (COMEXT data) *tonnes cwe*



24 January 2019

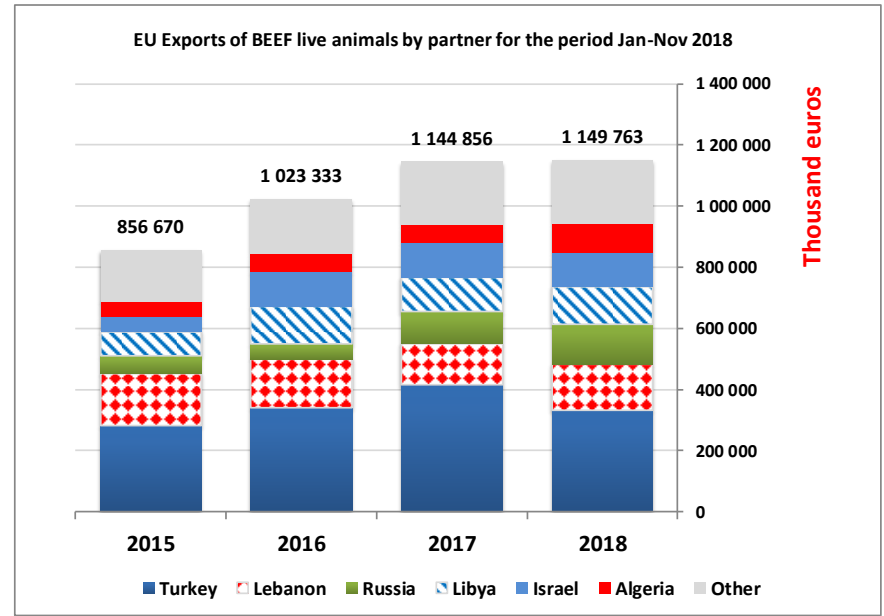
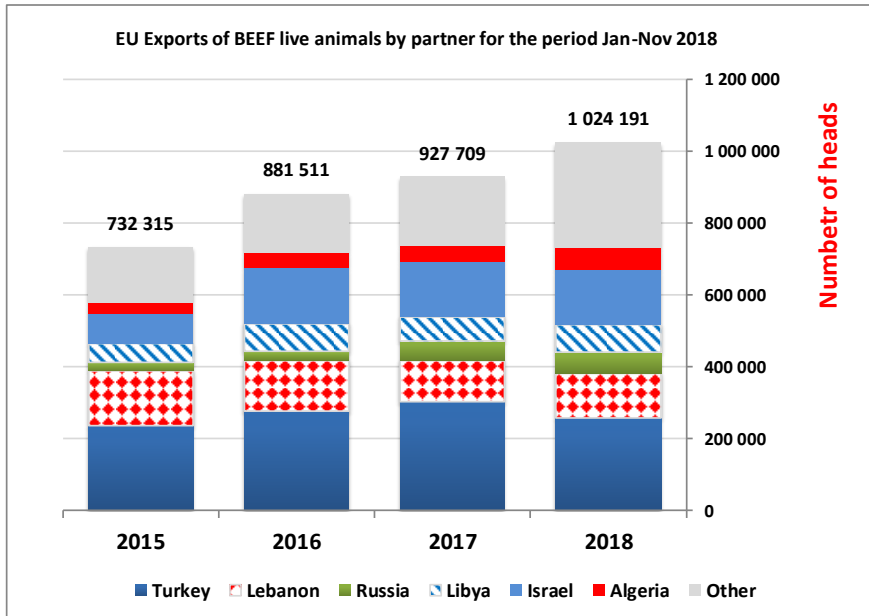
EU-28 Exports of LIVE Bovine Animals (Source COMEXT - Tonnes cwe)



24 January 2019

TRADE

EU EXPORTS Live Animals

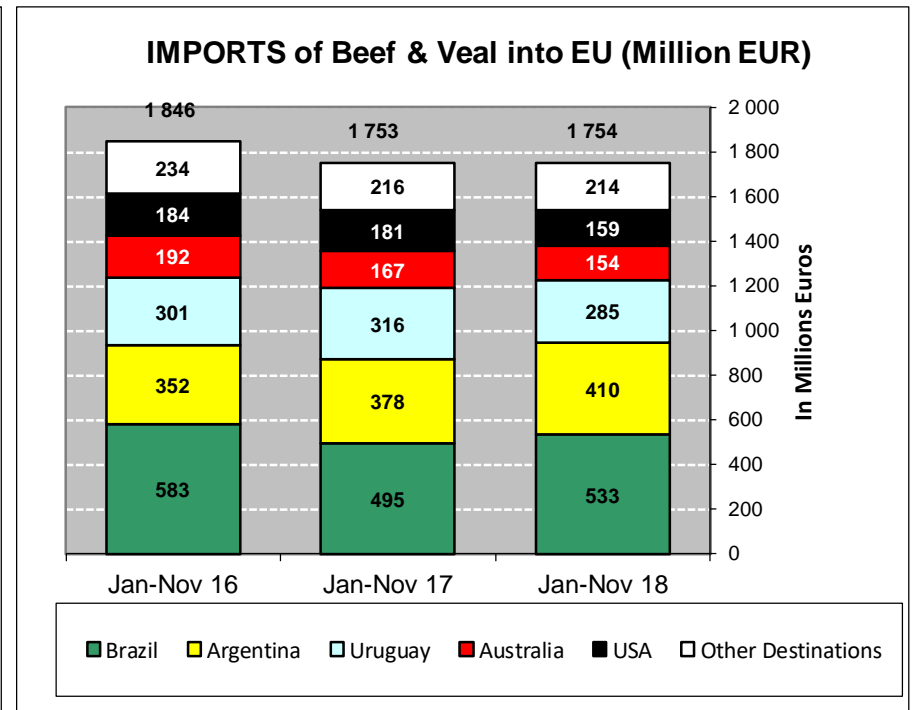
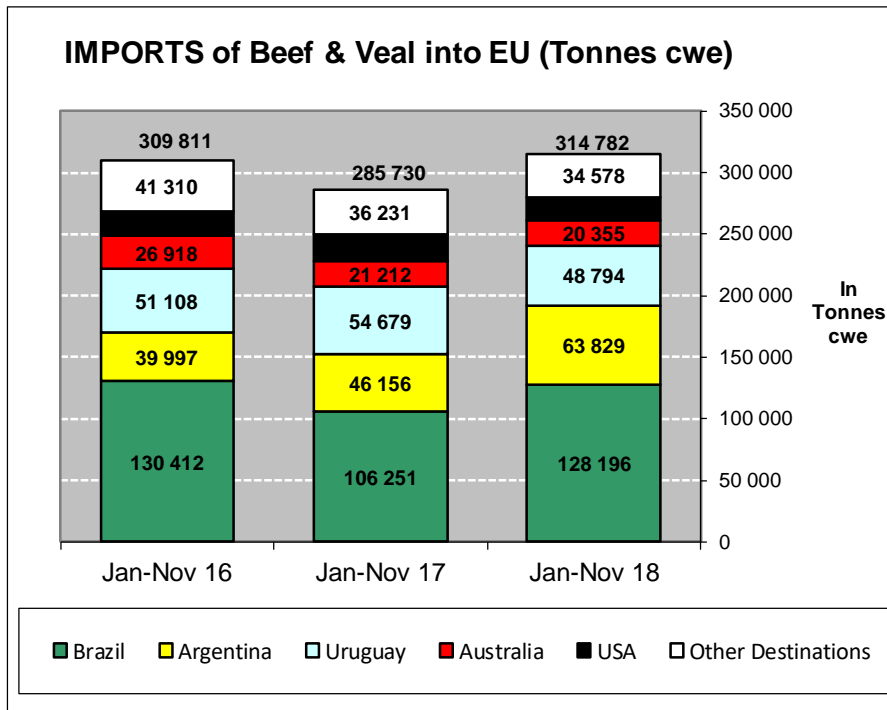


24 January 2019

EU imports of beef and live animals (1): Trade figures (COMEXT – tonnes cwe)

Origins	2014		2015		2016		2017		Jan-Nov 18		Compared to Jan-Nov 17
	tonnes	%	tonnes	%	tonnes	%	tonnes	%	tonnes	%	
Brazil	144 259	43.4%	136 858	42.4%	140 319	42.0%	115 392	37.7%	128 196	40.7%	+ 20.7%
Argentina	42 074	12.7%	42 149	13.0%	43 542	13.0%	49 890	16.3%	63 829	20.3%	+ 38.3%
Uruguay	49 043	14.8%	46 287	14.3%	56 747	17.0%	58 016	19.0%	48 794	15.5%	- 10.8%
Australia	32 653	9.8%	30 884	9.6%	27 850	8.3%	21 990	7.2%	20 355	6.5%	- 4.0%
USA	23 234	7.0%	24 132	7.5%	20 499	6.1%	21 624	7.1%	19 030	6.0%	- 10.2%
New Zealand	14 432	4.3%	11 380	3.5%	9 869	3.0%	8 093	2.6%	8 186	2.6%	+ 5.5%
Botswana	6 424	1.9%	9 258	2.9%	9 382	2.8%	7 718	2.5%	6 215	2.0%	- 6.9%
Paraguay	0	0.0%	1 915	0.6%	5 979	1.8%	6 915	2.3%	5 765	1.8%	- 8.8%
Namibia	9 994	3.0%	12 112	3.7%	10 686	3.2%	7 705	2.5%	5 236	1.7%	- 30.0%
Switzerland	5 456	1.6%	5 090	1.6%	5 500	1.6%	5 138	1.7%	4 908	1.6%	+ 6.0%
Serbia	425	0.1%	439	0.1%	557	0.2%	575	0.2%	1 110	0.4%	+++
Canada	780	0.2%	428	0.1%	421	0.1%	513	0.2%	1 032	0.3%	+++
Japan	100	0.0%	359	0.1%	579	0.2%	693	0.2%	714	0.2%	+ 13.5%
Other Origins	3 488	1.0%	1 810	0.6%	2 022	0.6%	1 842	0.6%	1 411	0.4%	
Extra-EU	332 362		323 099		333 952		306 105		314 782		
% change			- 3%		+ 3%		- 8%		+ 10.2%		

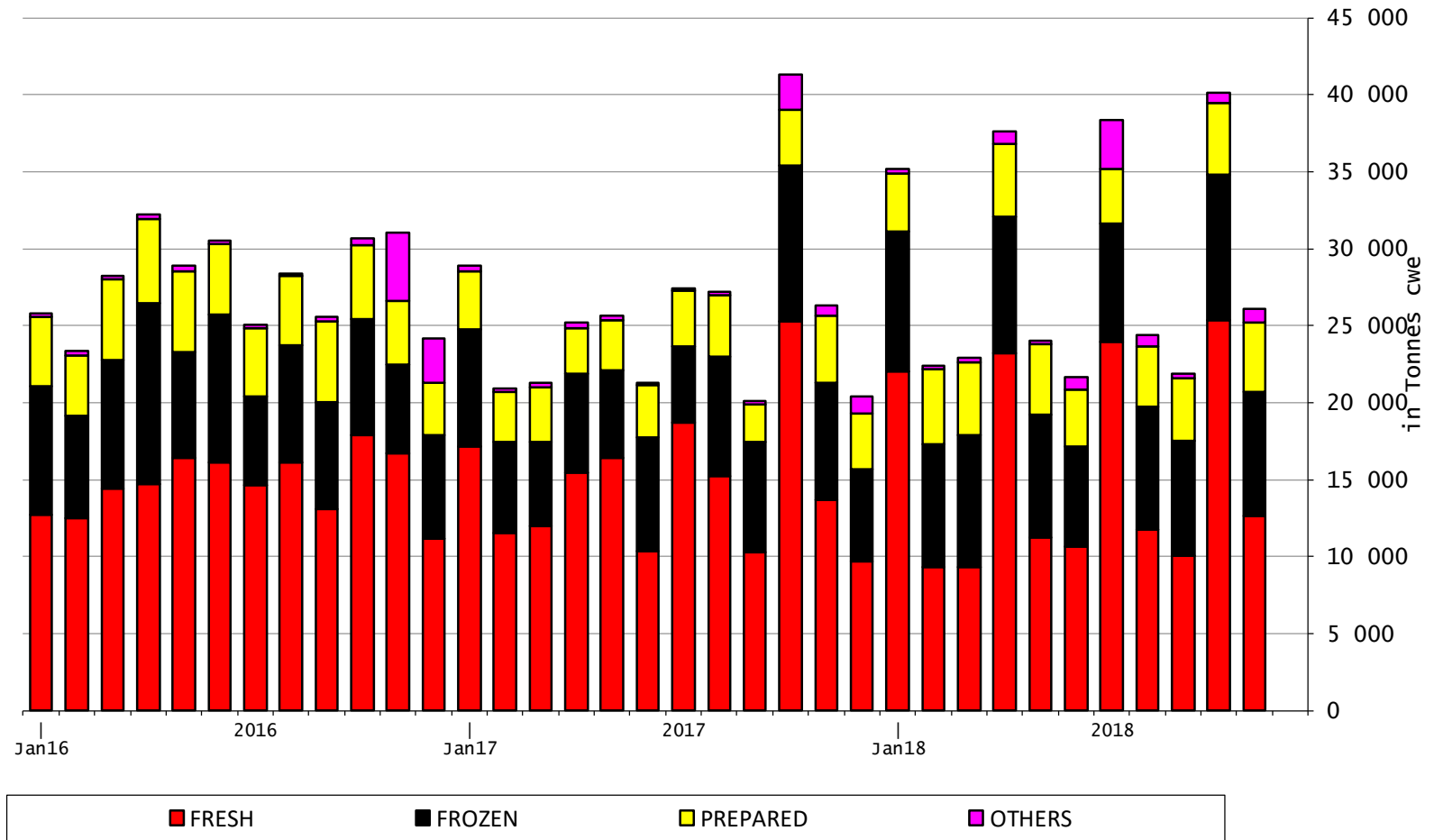
EU imports of beef and live animals (2): Trade figures (COMEXT)



TRADE

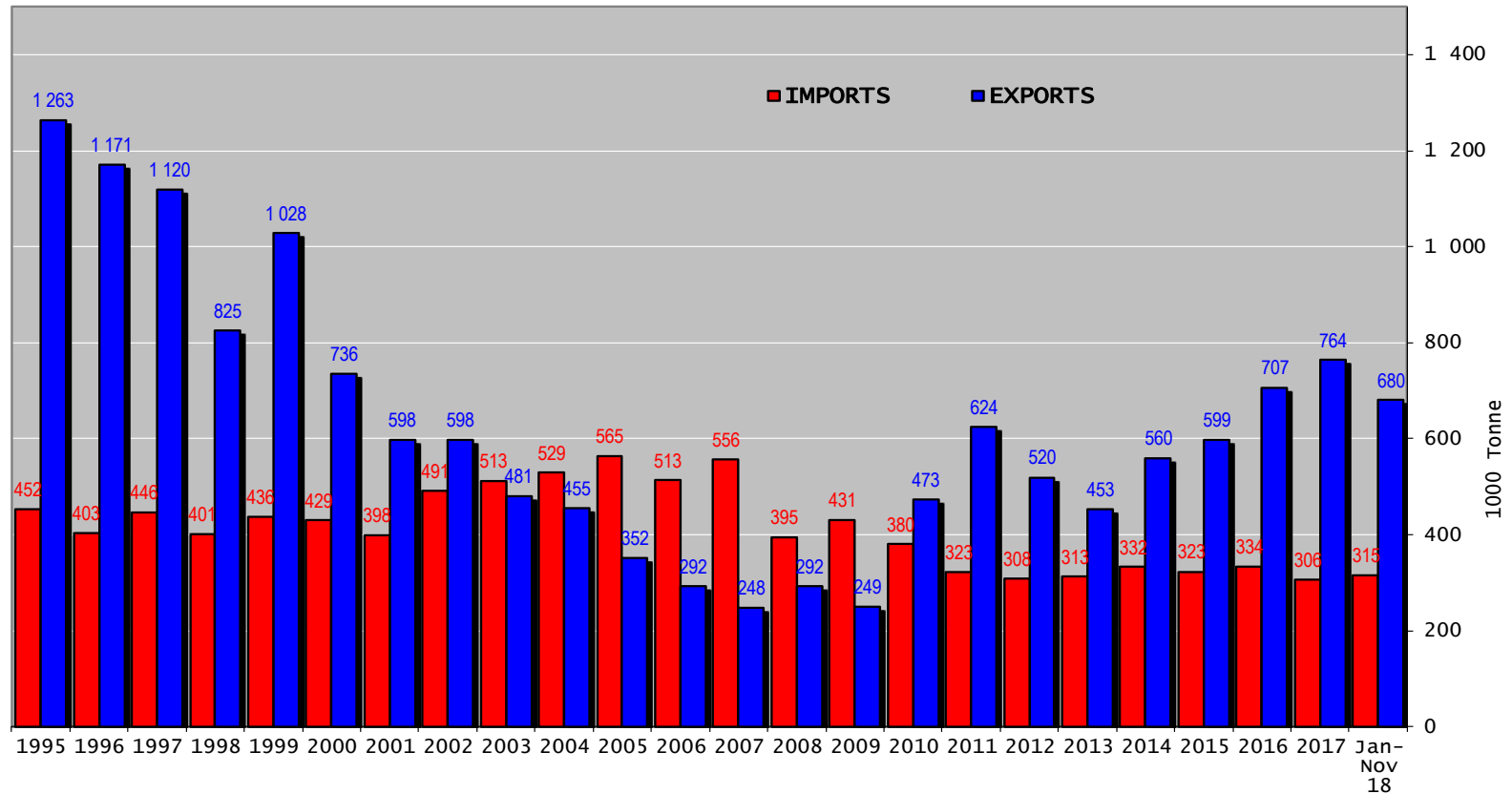
EU IMPORTS Beef Products

EU-28 Imports of BEEF products

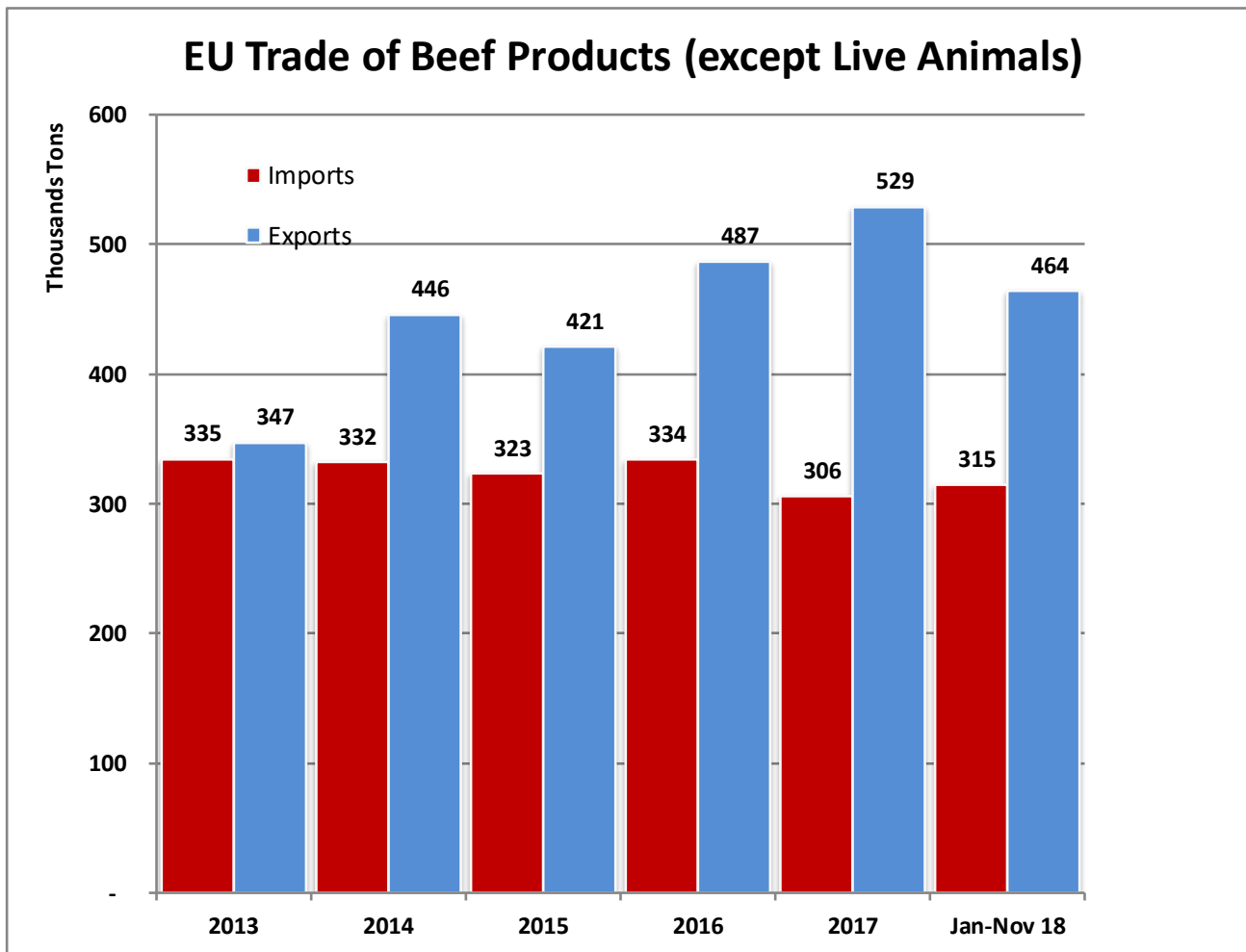


24January 2019

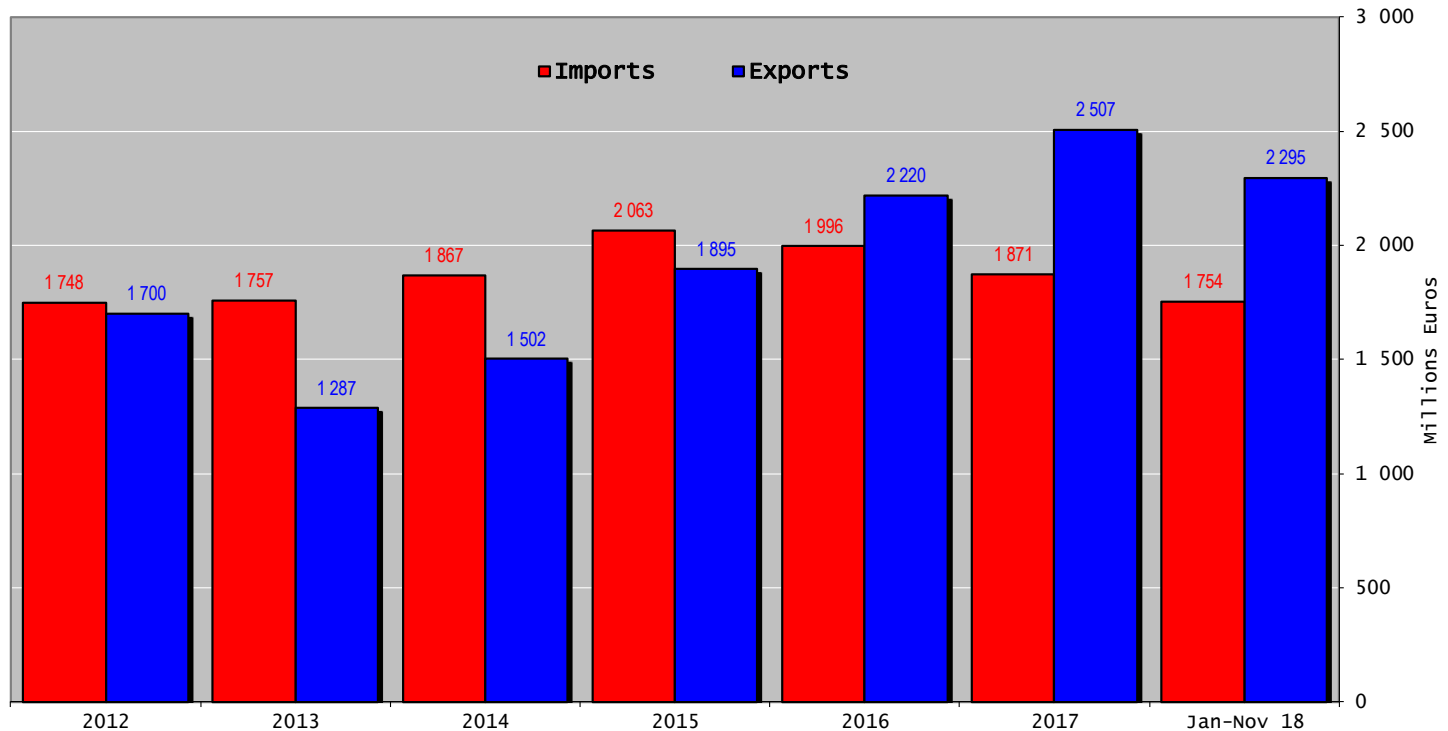
Trade balance of beef and live animals

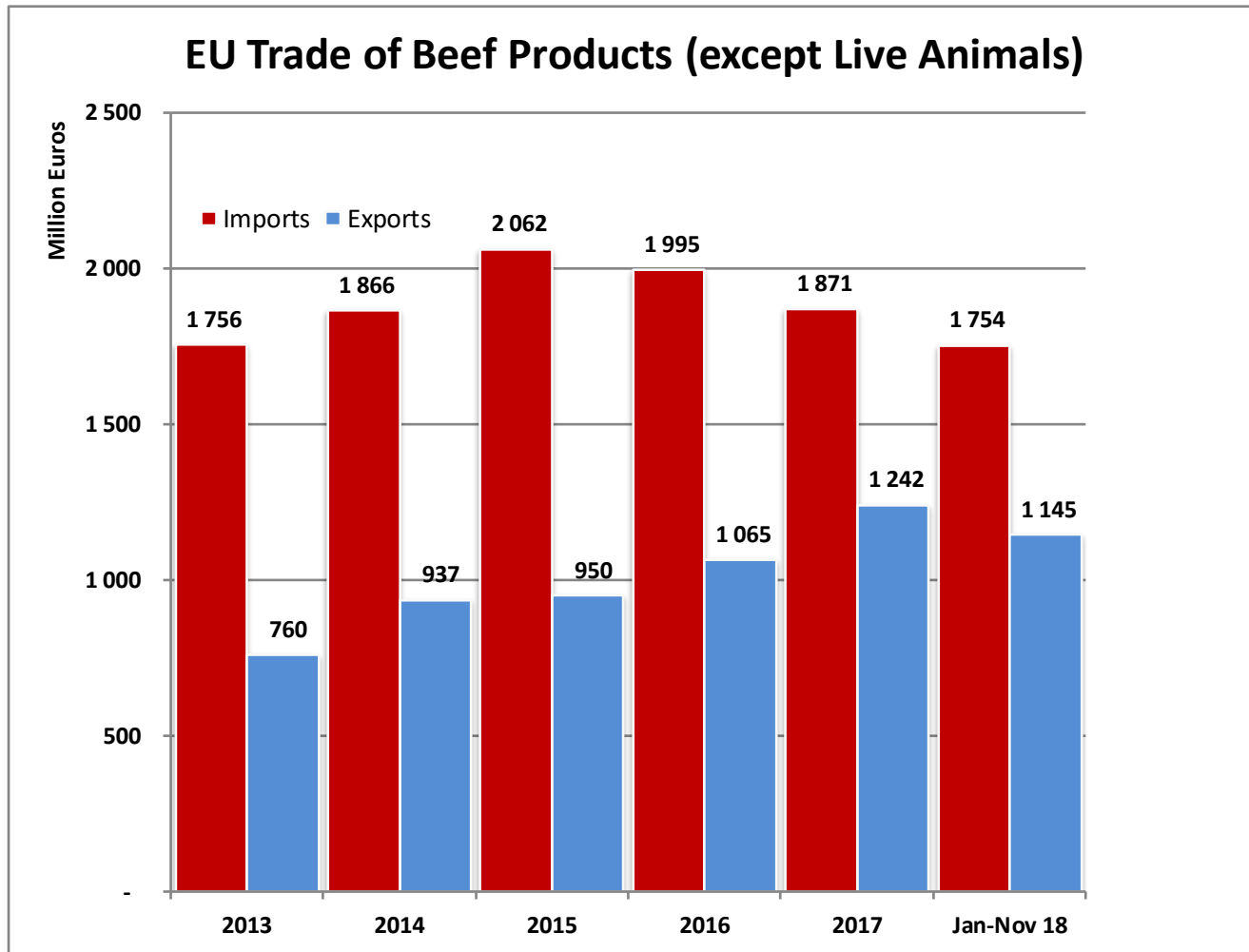


24 January 2019

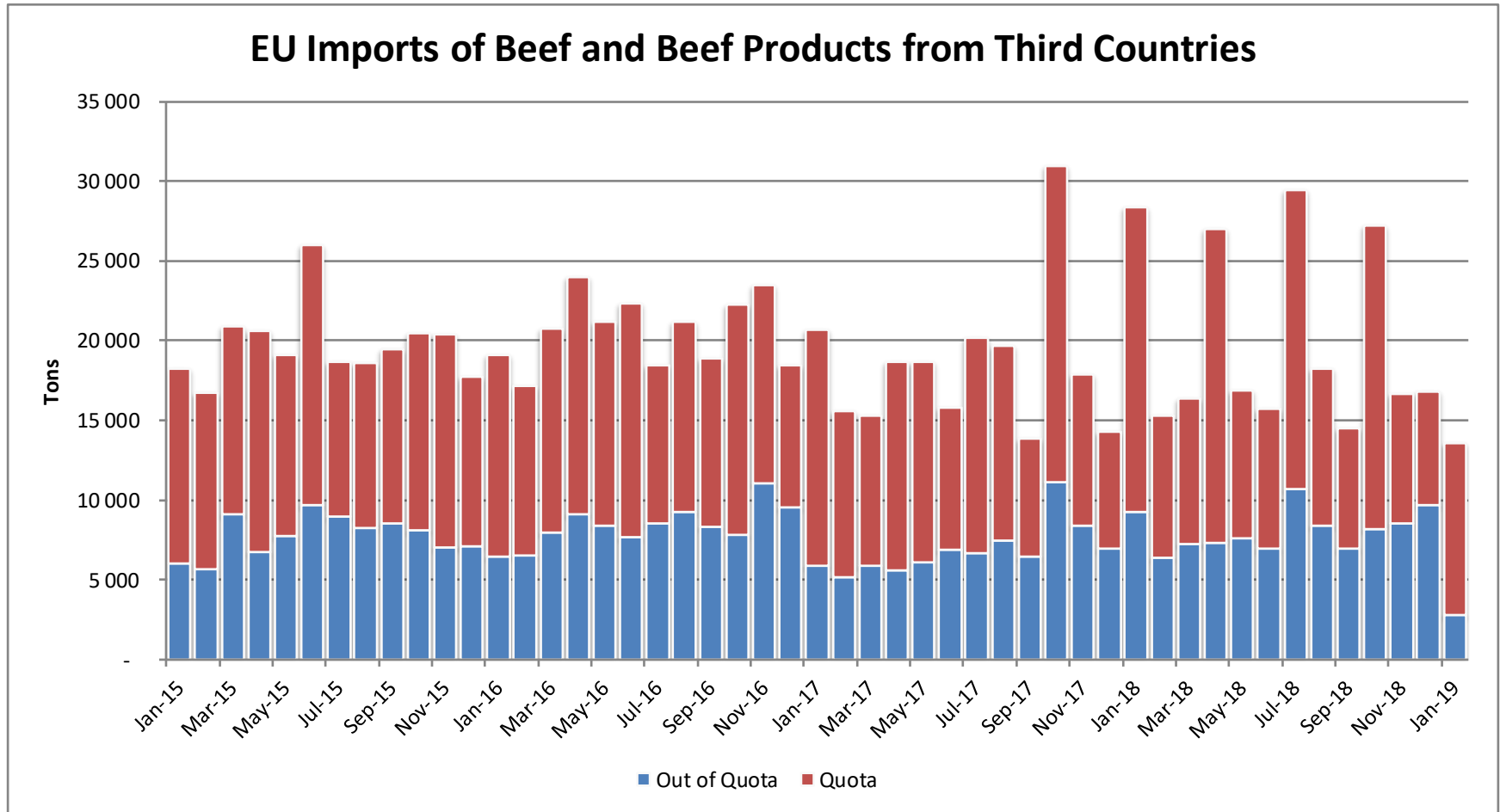


Trade balance of beef and live animals



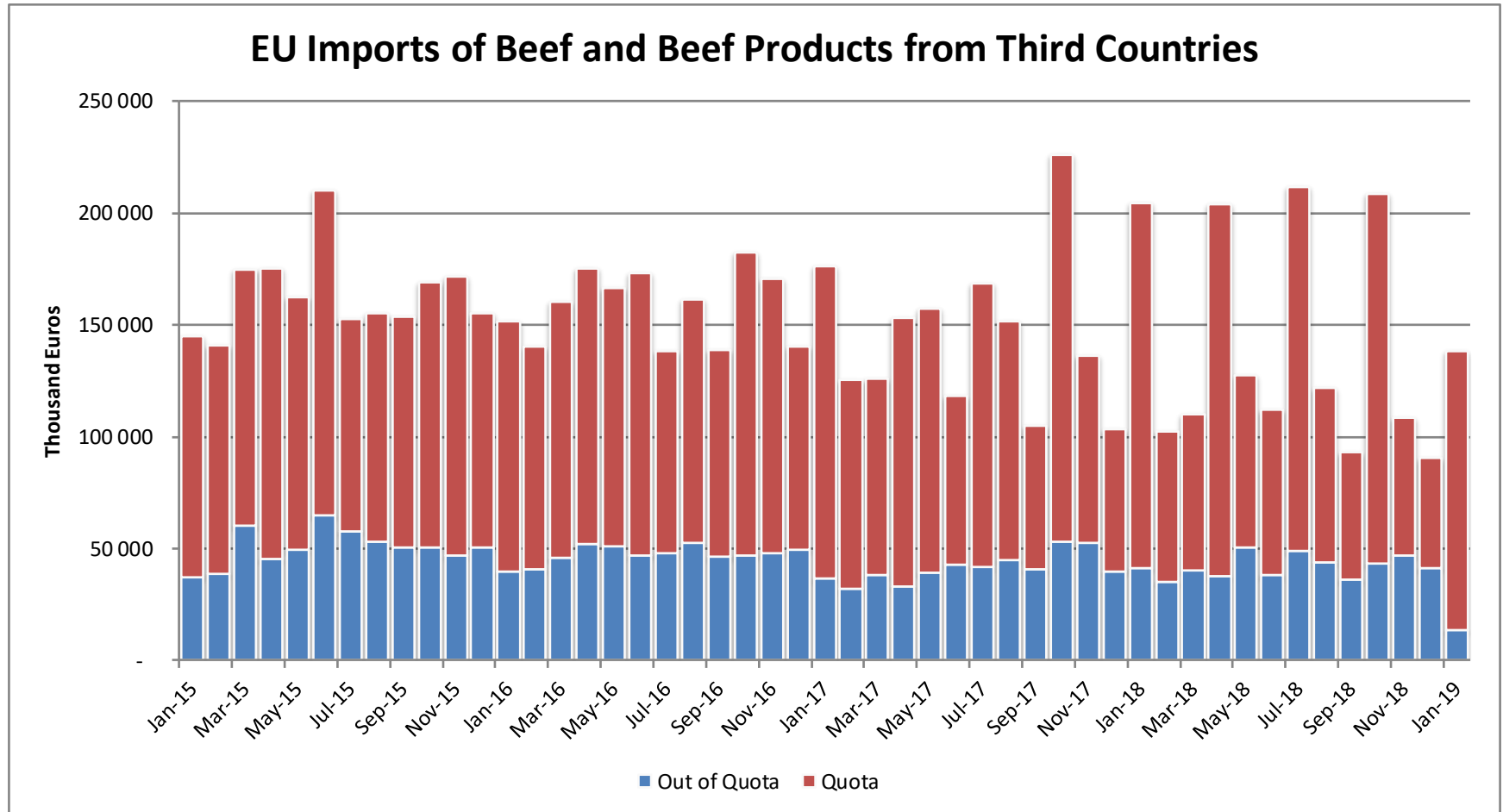


Imports in and out of TRQs



24 January 2019

Imports in and out of TRQs



24 January 2019

High Quality Beef Import Quotas

Hilton Quota		Regulation (EU) N° 593/2013						
		Quantity allocated (Tons)	2016/2017		2017/2018		2018/2019*	
			Use		Use		Use	
09.4001	Australia	2 250						
09.4004	Argentina	200	12.75	6.38%	14.67	7.34%	4.90	2.45%
09.4450	Argentina	29 500	23 111.89	78.35%	28 091.29	95.22%	12 513.40	42.42%
09.4451	Australia	7 150	4 051.04	56.66%	5 333.48	74.59%	3 446.34	48.20%
09.4452	Uruguay	6 376	6 365.55	99.84%	6 363.24	99.80%	2 995.52	46.98%
09.4453	Brazil	10 000	8 572.40	85.72%	5 057.27	50.57%	2 665.93	26.66%
09.4454	New Zealand	1 300	1 161.63	89.36%	1 122.25	86.33%	515.78	39.68%
09.4002	Canada/US	11 500	421.40	3.66%	2 351.37	20.45%	3 110.95	27.05%
09.4455	Paraguay	1 000	982.60	98.26%	962.21	96.22%	429.63	42.96%
Total Beef		66 826	44 666.51	66.84%	49 281.11	73.75%	25 677.55	38.42%
Total Buffalo		2 450	12.75	0.52%	14.67	0.60%	4.90	0.20%
Total		69 276	44 679.26	64.49%	49 295.78	71.16%	25 682.45	37.07%

* up to 30/11/2018

High Quality Beef Import Quotas

Quota erga omnes

Regulation (EU) No 481/2012

	2013-Q3	2013-Q4	2014-Q1	2014-Q2	TOTAL
Period 2013-2014	10 198 942	10 493 437	10 191 527	10 282 860	41 166 765
Available	12 050 000	12 050 000	12 050 000	12 050 000	48 200 000
Use	84.64%	87.08%	84.58%	85.33%	85.41%

	2014-Q3	2014-Q4	2015-Q1	2015-Q2	TOTAL
Period 2014-2015	11 842 700	11 745 231	11 353 830	12 457 389	47 399 150
Available	12 050 000	12 050 000	12 050 000	12 050 000	48 200 000
Use	98.28%	97.47%	94.22%	103.38%	98.34%
Available after transfer	12 050 000	12 257 300	12 562 069	13 258 240	
	98.28%	95.82%	90.38%	93.96%	

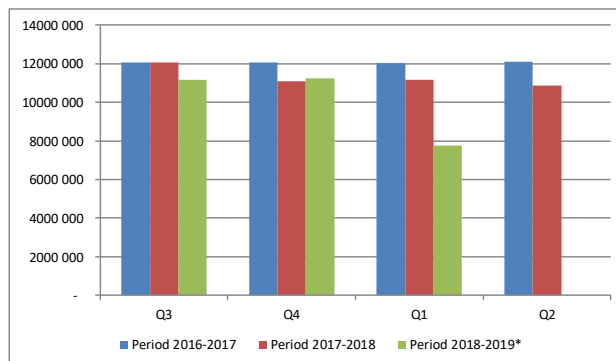
	2015-Q3	2015-Q4	2016-Q1	2016-Q2	TOTAL
Period 2015-2016	11 952 185	11 851 187	11 535 011	12 664 673	48 003 056
Available	12 050 000	12 050 000	12 050 000	12 050 000	48 200 000
Use	99.19%	98.35%	95.73%	105.10%	99.59%
Available after transfer	12 050 000	12 147 815	12 346 627	12 861 617	
	99.19%	97.56%	93.43%	98.47%	

	2016-Q3	2016-Q4	2017-Q1	2017-Q2	TOTAL
Period 2016-2017	12 059 567	12 062 828	12 015 258	12 095 591	48 233 243
Available	12 050 000	12 050 000	12 050 000	12 050 000	48 200 000
Use	100.00%	100.00%	99.71%	100.00%	100.00%
Available after transfer	12 050 000	12 040 433	12 027 606	12 062 348	
	100.00%	100.00%	99.90%	100.00%	

	2017-Q3	2017-Q4	2018-Q1	2018-Q2	TOTAL
Period 2017-2018	12 051 815	11 102 252	11 161 480	10 859 149	45 174 696
Available	12 050 000	11 161 000	11 250 000	11 250 000	45 711 000
Use	100.00%	99.47%	99.21%	96.53%	98.83%
Available after transfer	12 050 000	11 159 185	11 308 748	11 338 520	
	100.00%	99.49%	98.70%	95.77%	

	2018-Q3	2018-Q4	2019-Q1	2019-Q2	TOTAL
Period 2018-2019*	11 165 848	11 236 057	7 767 024	-	30 168 928
Available	11 250 000	11 250 000	11 250 000	11 250 000	45 000 000
Use	99.25%				67.04%
Available after transfer	11 250 000	11 334 152	11 263 943		
	99.25%	99.13%	68.95%		

* Until 17.01.2019

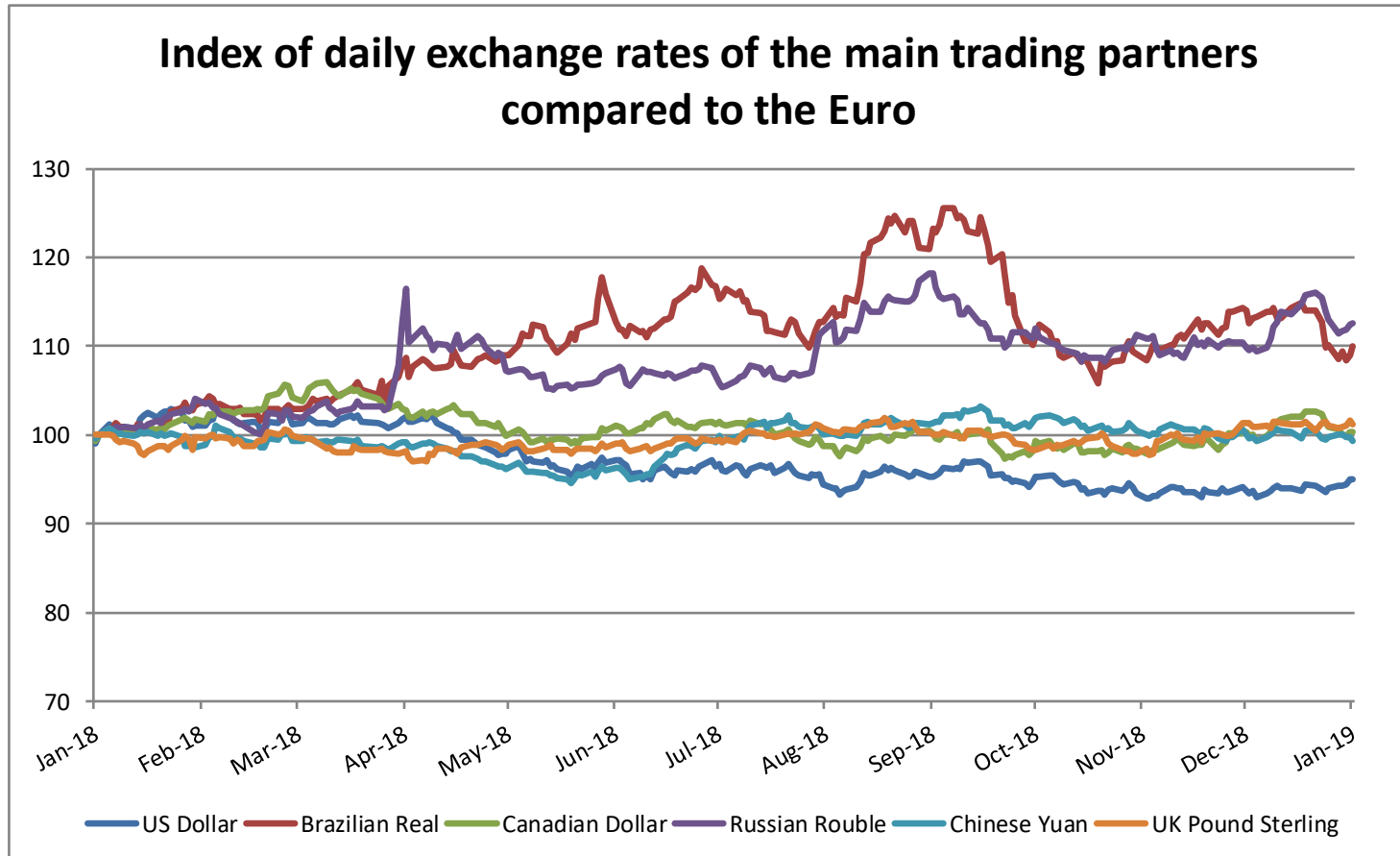


24 January 2019

WORLD BEEF MARKET

EXCHANGE RATE INDEX / Euro

Main Trading Partners



Source : ECB

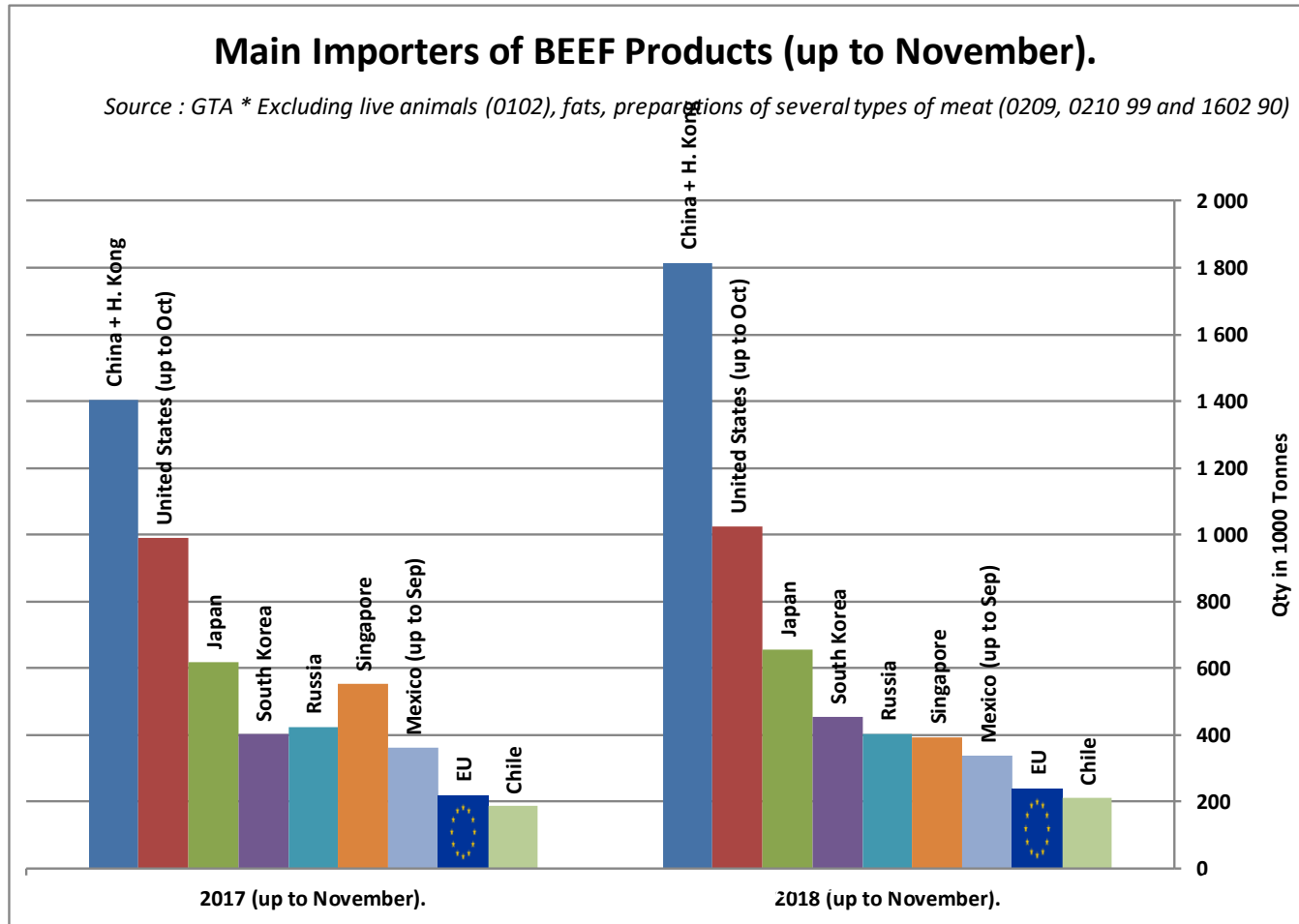
24January 2019

WORLD BEEF MARKET

E.U. IMPORTS BEEF MAIN IMPORTERS

Source : GTA

* Excluding live animals (0102), fats, preparations of several types of meat (0209, 0210 99 and 1602 90)



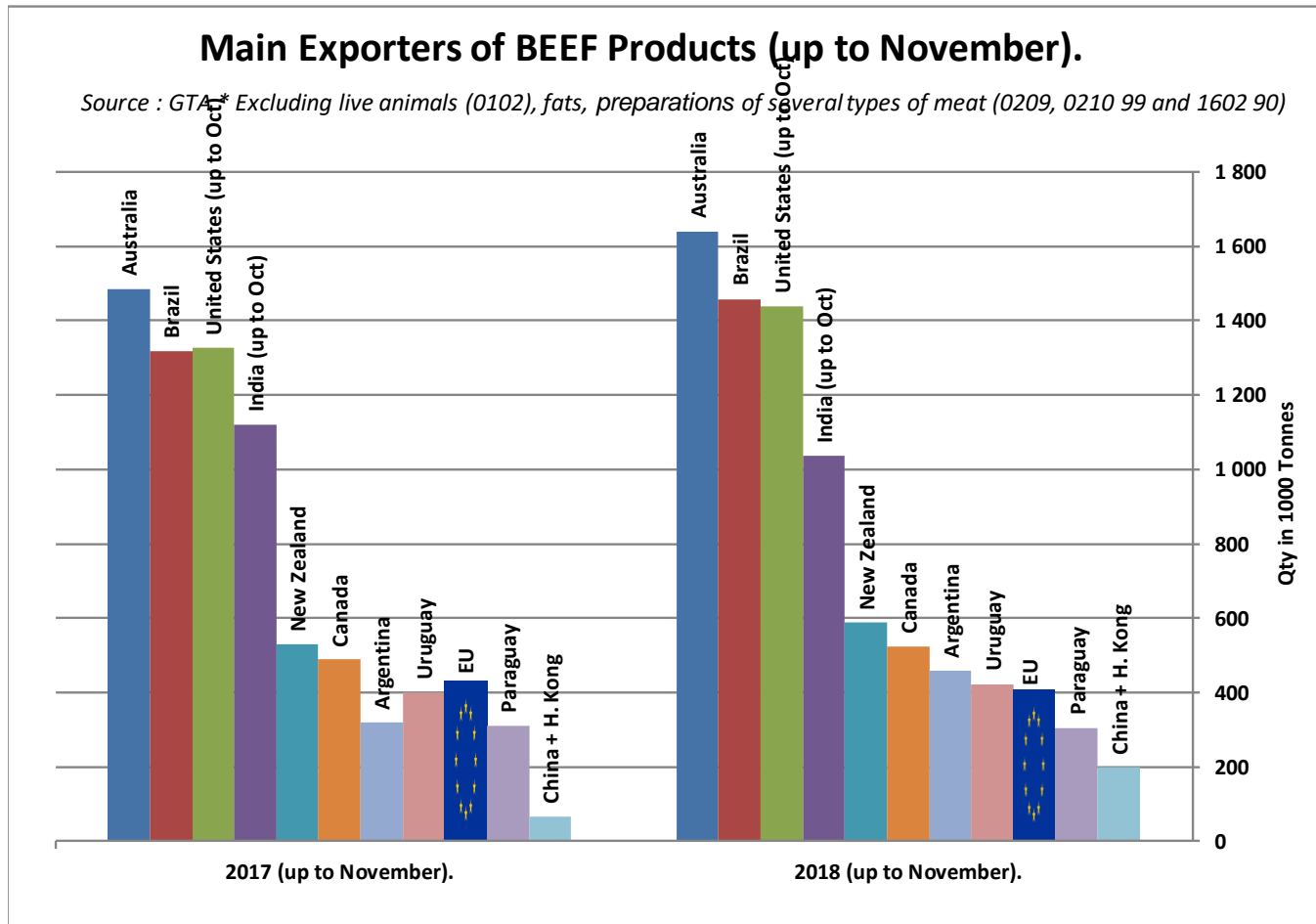
24January 2019

WORLD BEEF MARKET

E.U. EXPORTS BEEF MAIN EXPORTERS

Source : GTA

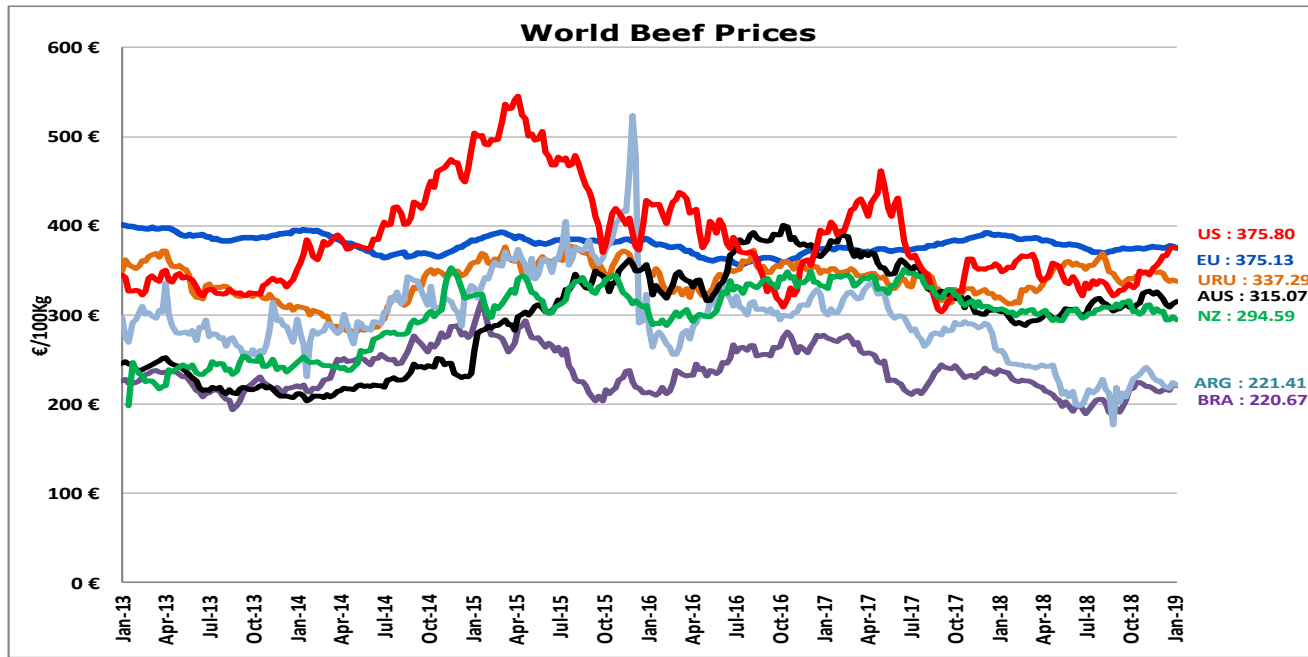
* Excluding live animals (0102), fats, preparations of several types of meat (0209, 0210 99 and 1602 90)



24January 2019

WORLD BEEF MARKET

STEER PRICES EU, US, AUS, NZ



- ECB <http://sdw.ecb.europa.eu/browse.do?node=2018794>
- US <https://www.marketnews.usda.gov/mnp/lis-home>
- AUS <http://statistics.mla.com.au/Report/RunReport/ae59d4ac-74e4-4c56-93bd-982a044d9760>
- UY <http://www.inac.gub.uy/innovaportal/v/11034/10/innova.front/indicadores-y-precios>
- ARG http://www.abc-consorcio.com.ar/Estadisticas/detalle/117/precios_comparativos_del_novillo.html
- BR <http://www.pecuaria.com.br/cotacoes.php>
- NZ http://www.abc-consorcio.com.ar/Estadisticas/detalle/117/precios_comparativos_del_novillo.html

24January 2019

THANK YOU VERY MUCH

More Information at:

EU Market Observatory

https://ec.europa.eu/agriculture/market-observatory/meat_en

And

Agri-FOOD data portal:

<http://agridata.ec.europa.eu/>